

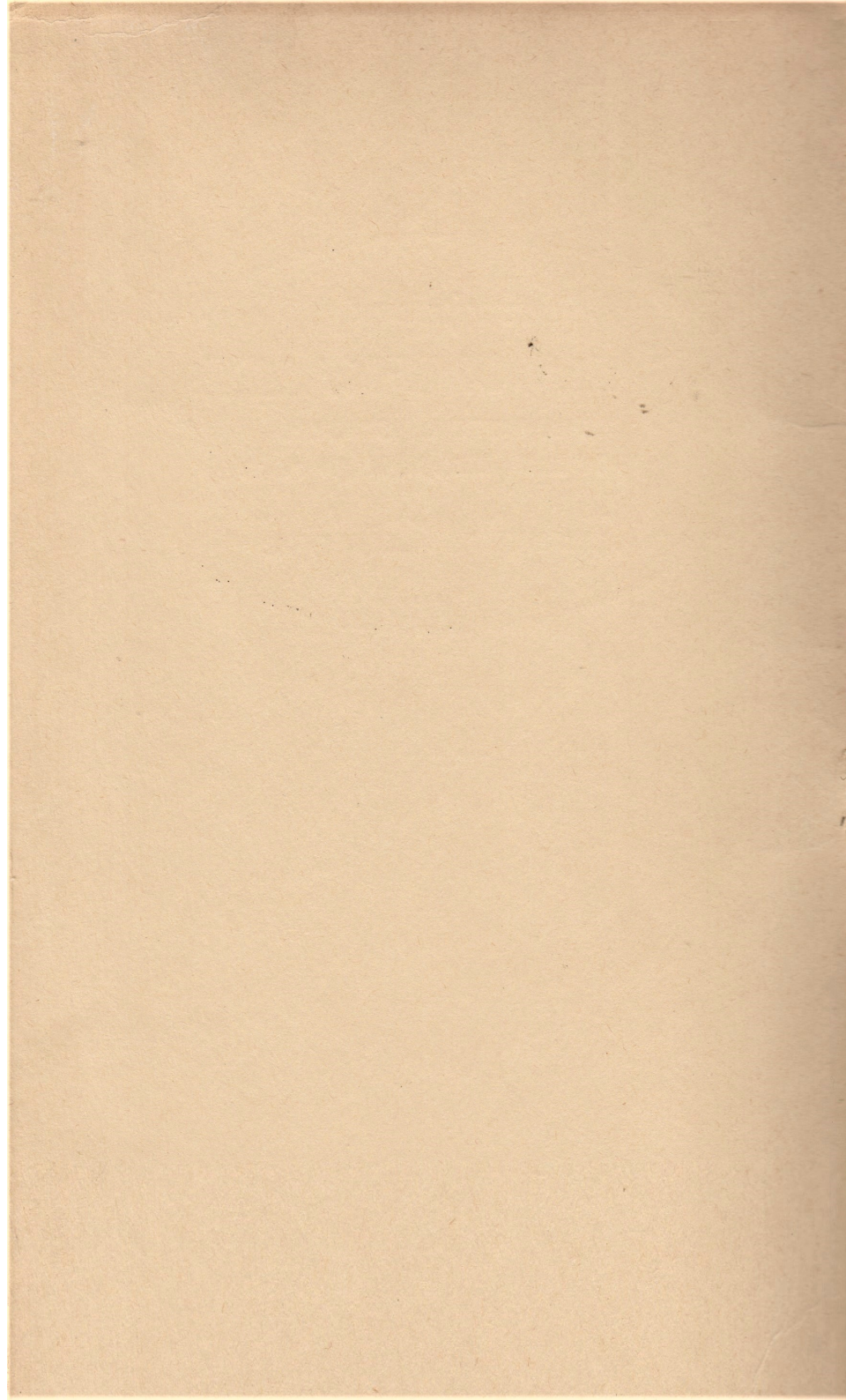
Description &

GAUMONT-KALEE

PROJECTOR STANDS

MODELS G.K. 21, 20, 19 & 18

Spare Parts Catalogue



CONTENTS

PART 1

	<i>Page</i>
G.K. 21 STAND	
Description	3
Installation Details—Drawing No. 2146	4
Dimensional and Installation Diagram—Drawing No. 2147	5
Installation Diagram—Drawing No. 2148	6
Stand Projector Control Wiring Diagram—Drawing No. 2131	7
Electrical Combinations—	
Drawing No. 2126	8
Parts List	9
Changeover Wiring Diagram for No. 1 Machine—Drawing No. 2132	10
Changeover Wiring Diagram for No. 2 Machine—Drawing No. 2133	11
Arc Control Panel Wiring Diagram—Drawing No. 2135	12
Schematic Diagram of Changeover Wiring—Drawing No. 2134	13
Mechanical Accessories—	
Drawing No. 2127	14
Parts List	15
Bottom Take-up Assemblies for G.K. 19, 20 and 21 Stands, with Type 83 Soundheads—	
Drawing No. 2128	16
Parts List	17

PART 2

G.K. 20 and 19 STANDS	
Description	18
Wiring Diagram for G.K. 20 and 19 Arc Control Box—Drawing No. 1940	19
Installation Details for G.K. 20 and 19—Drawing No. 1943	20
Dimensional and Installation Diagram for G.K. 19 and 20 Outfits—Drawing No. 1944	21
Installation Diagram for G.K. 20 Outfit—Drawing No. 2045	22
Installation Wiring Diagram for G.K. 20 and 19 Projector Control Box—Drawing No. 1941	23
Electrical Combinations of G.K. 20 and 19 Stands adapted to Types 83, 378 and 543 Soundheads—	
Drawing No. 1929	24
Parts List	25
Electrical Combinations of G.K. 20 and 19 Stands adapted to G.K. 83, 378 and 543 Soundheads. Without Exciter Switch—	
Drawing No. 1942	26
Parts List	27
Wiring Diagram for G.K. 20 and 19, fitted with Pyrene Equipment, No. 1 Machine—Drawing No. 1936	28
Wiring Diagram for G.K. 20 and 19, fitted with Pyrene Equipment, No. 2 Machine—Drawing No. 1937	29
Wiring Diagram for G.K. 20 and 19, without Pyrene Equipment, No. 1 Machine—Drawing No. 1938	30
Wiring Diagram for G.K. 20 and 19, without Pyrene Equipment, No. 2 Machine—Drawing No. 1939	31

CONTENTS—continued

PART 2—continued

Mechanical Accessories for G.K. 20—	
Drawing No. 1930	32
Parts List	33
Mechanical Accessories for G.K. 19—	
Drawing No. 1949	34
Parts List	35

PART 3

G.K. 18 STAND	
Description	37
Installation Details—Drawing No. 1802	38
Dimensional and Installation Diagram—Drawing No. 1803	39
Installation Diagram—Drawing No. 1801	40
Wiring Diagram—Drawing No. 1806	41
Electrical Combinations—	
Drawing No. 1807	42
Parts List	43
Mechanical Accessories—	
Drawing No. 1804	44
Parts List	45
Bottom Take-up Assembly—	
Drawing No. 1808	46
Parts List	47

Part 1

THE G.K. 21 STAND

This Stand comprises a fixed foot upon which is mounted a tiltable assembly which incorporates platforms for soundhead and arc lamp integral with the bottom spool box.

The foot portion comprises a heavy cast iron base furnished with levelling screws. Bolted to this base is a cast iron central column on the top of which is mounted a trunnion bearing, around which the rest of the assembly pivots. The degree of tilt is regulated by a jack screw passing through a pivoted trunnion block carried in the forward end of the base casting.

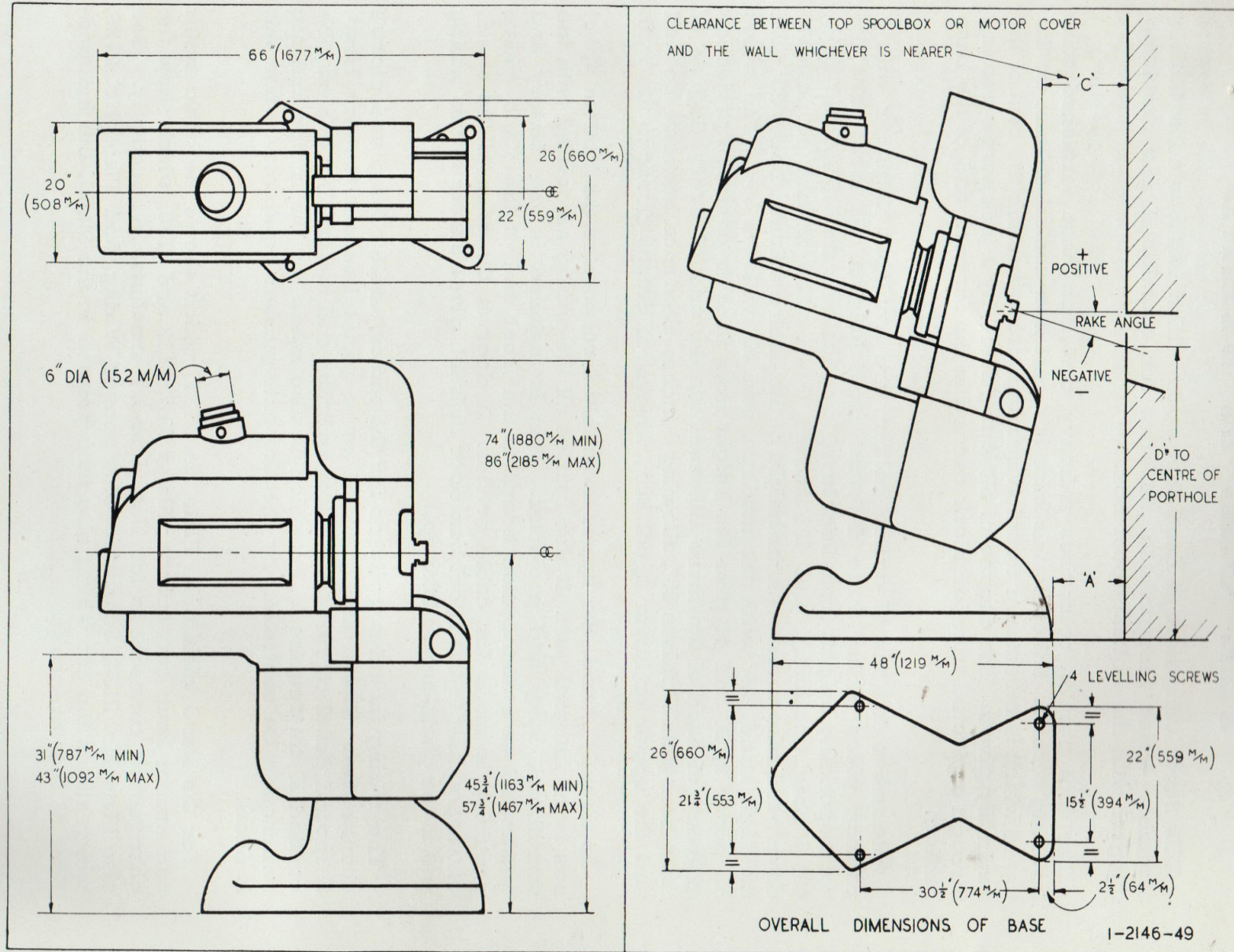
Alternative lengths of centre column are available, together with a packing piece giving three different stand heights. At level rake the corresponding heights from floor level to optical axis are $51\frac{1}{4}$ inches (high), $48\frac{1}{4}$ inches (medium), and $45\frac{1}{4}$ inches (low). The maximum possible downward rake varies with the height of the centre column, being 30° with the high stand, 25° with the medium, and 20° with the low. The tables on pages 9, 26 and 46 give the height from floor to centre of projection aperture of each of the three different stands, and of every degree of rake from plus 5° minus 30° , allowing 6 inches clearance between the wall and the upper or lower spool box, whichever comes closer to the wall.

As already stated, the upper assembly incorporates the bottom spool box as an integral part. It also carries all the wiring associated with the soundhead, lamp and projector. This is installed in the factory and terminated at a distribution board at the front end of the stand where provision is made for cable entries. A door at the rear of the stand, corresponding to the spool box door in front, gives access to this wiring and to the chain-driven take-up.

The wiring includes switches for the motor, exciter lamp and picture changeover. These are grouped on a panel beneath the arc lamp. A second panel carries arc control switches and meters, but this may be omitted if not required. Provision is also made for the motor and arc switches to be controlled by the fire extinguisher equipment when this is fitted.

For the stand wiring see Plate No. 2131, which shows the basic motor and exciter lamp connections; Plates Nos. 2132 and 2133, which show the changeover connections for Nos. 1 and 2 machines respectively. See also Plate No. 2134, Schematic Changeover Wiring, and Plate No. 2135, which shows the arc wiring also incorporated in the Stand, but independent of the foregoing.

PLATE No. 2146. INSTALLATION DETAILS FOR G.K. 21 STAND



DIMENSIONAL & INSTALLATION DIAGRAM FOR GK 21 OUTFIT

PORTHOLE HEIGHT FOR HIGH STAND — MAX RAKE-30°— LEVEL OPTICAL CENTRE HEIGHT $51 \frac{3}{4}$ " (1315 M/M)

RAKE	WHEN A=6" (152 M/M)				WHEN A=12" (305 M/M)				WHEN A=18" (457 M/M)				RAKE	WHEN A=6" (152 M/M)				WHEN A=12" (305 M/M)				WHEN A=18" (457 M/M)			
	D		C		D		C		D		C			D		C		D		C		D		C	
+5°	55	1397	8 $\frac{1}{2}$	216	54 $\frac{1}{2}$	1384	14 $\frac{1}{2}$	368	53 $\frac{3}{8}$	1369	20 $\frac{1}{2}$	521	-13°	46	1169	7 $\frac{3}{8}$	197	44 $\frac{3}{8}$	1134	13 $\frac{3}{8}$	349	43 $\frac{3}{8}$	1096	19 $\frac{3}{8}$	502
+4°	54 $\frac{1}{2}$	1384	8 $\frac{3}{8}$	219	54	1372	14 $\frac{3}{8}$	372	53 $\frac{1}{2}$	1359	20 $\frac{3}{8}$	524	-14°	45 $\frac{3}{8}$	1159	7 $\frac{1}{8}$	194	44	1118	13 $\frac{1}{8}$	347	42 $\frac{1}{2}$	1080	19 $\frac{1}{8}$	499
+3°	53 $\frac{1}{2}$	1365	8 $\frac{1}{4}$	222	53 $\frac{1}{2}$	1359	14 $\frac{1}{4}$	375	53 $\frac{1}{8}$	1350	20 $\frac{1}{4}$	527	-15°	45 $\frac{1}{8}$	1146	7 $\frac{1}{2}$	190	43 $\frac{1}{2}$	1105	13 $\frac{1}{2}$	344	41 $\frac{1}{8}$	1064	19 $\frac{1}{2}$	495
+2°	53	1347	8 $\frac{3}{4}$	222	52 $\frac{7}{8}$	1343	14 $\frac{3}{4}$	375	52 $\frac{3}{8}$	1337	20 $\frac{3}{4}$	527	-16°	44 $\frac{3}{4}$	1137	7	178	43	1092	13	330	41 $\frac{1}{4}$	1048	19	483
+1°	52 $\frac{1}{2}$	1334	8 $\frac{7}{8}$	225	52 $\frac{1}{2}$	1327	14 $\frac{7}{8}$	378	52 $\frac{1}{4}$	1327	20 $\frac{7}{8}$	530	-17°	44 $\frac{1}{4}$	1124	6 $\frac{1}{2}$	165	42 $\frac{1}{2}$	1080	12 $\frac{1}{2}$	317	40 $\frac{3}{8}$	1032	18 $\frac{1}{2}$	470
-0°	51 $\frac{3}{4}$	1315	9	229	51 $\frac{3}{4}$	1315	15	381	51 $\frac{3}{4}$	1315	21	533	-18°	43 $\frac{7}{8}$	1115	5 $\frac{7}{8}$	149	41 $\frac{7}{8}$	1064	11 $\frac{7}{8}$	302	39 $\frac{7}{8}$	1013	17 $\frac{7}{8}$	454
-1°	51 $\frac{1}{4}$	1302	8 $\frac{7}{8}$	225	51 $\frac{1}{4}$	1302	14 $\frac{7}{8}$	378	51 $\frac{1}{8}$	1298	20 $\frac{7}{8}$	530	-19°	43 $\frac{3}{8}$	1102	5 $\frac{1}{4}$	133	41 $\frac{1}{4}$	1048	11 $\frac{1}{4}$	286	39 $\frac{1}{4}$	997	17 $\frac{1}{4}$	438
-2°	50 $\frac{3}{8}$	1292	8 $\frac{3}{4}$	222	50 $\frac{3}{8}$	1286	14 $\frac{3}{4}$	375	50 $\frac{3}{4}$	1283	20 $\frac{3}{4}$	527	-20°	43	1092	4 $\frac{3}{4}$	121	40 $\frac{3}{4}$	1035	10 $\frac{3}{4}$	273	38 $\frac{1}{2}$	978	16 $\frac{3}{4}$	425
-3°	50 $\frac{1}{2}$	1283	8 $\frac{1}{2}$	222	50 $\frac{1}{2}$	1273	14 $\frac{1}{2}$	375	49 $\frac{3}{4}$	1264	20 $\frac{1}{2}$	527	-21°	NOTE:— TO ALLOW SPOOLBOX DOOR TO OPEN CLEARANCE 'C' MUST NOT BE LESS THAN 4 $\frac{1}{2}$ " (113 M/M)				40 $\frac{1}{4}$	1023	10 $\frac{1}{4}$	260	38	965	16 $\frac{1}{4}$	413
-4°	50	1270	8 $\frac{5}{8}$	219	49 $\frac{1}{2}$	1257	14 $\frac{5}{8}$	372	49 $\frac{1}{8}$	1248	20 $\frac{5}{8}$	524	-22°					39 $\frac{5}{8}$	1007	9 $\frac{1}{2}$	248	37 $\frac{1}{2}$	946	15 $\frac{1}{2}$	400
-5°	49 $\frac{1}{2}$	1257	8 $\frac{1}{2}$	216	49	1245	14 $\frac{1}{2}$	368	48 $\frac{3}{8}$	1229	20 $\frac{1}{2}$	521	-23°					39 $\frac{1}{8}$	994	9 $\frac{1}{8}$	232	36 $\frac{1}{2}$	927	15 $\frac{1}{8}$	384
-6°	49 $\frac{1}{8}$	1248	8 $\frac{3}{8}$	213	48 $\frac{1}{2}$	1232	14 $\frac{3}{8}$	365	47 $\frac{3}{4}$	1216	20 $\frac{3}{8}$	518	-24°					38 $\frac{3}{8}$	968	8 $\frac{3}{8}$	219	35 $\frac{3}{8}$	911	14 $\frac{3}{8}$	372
-7°	48 $\frac{3}{8}$	1235	8 $\frac{1}{4}$	210	47 $\frac{7}{8}$	1216	14 $\frac{1}{4}$	362	47 $\frac{1}{8}$	1197	20 $\frac{1}{4}$	514	-25°					38	965	8	203	35 $\frac{1}{4}$	895	14	356
-8°	48 $\frac{1}{4}$	1226	8 $\frac{1}{4}$	210	47 $\frac{3}{8}$	1204	14 $\frac{1}{4}$	362	46 $\frac{1}{2}$	1181	20 $\frac{1}{4}$	514	-26°					37 $\frac{1}{2}$	953	7 $\frac{1}{4}$	187	34 $\frac{1}{2}$	876	13 $\frac{1}{4}$	340
-9°	47 $\frac{1}{2}$	1213	8 $\frac{1}{8}$	206	46 $\frac{3}{4}$	1188	14 $\frac{1}{8}$	359	45 $\frac{3}{4}$	1165	20 $\frac{1}{8}$	511	-27°					36 $\frac{1}{2}$	936	6 $\frac{1}{2}$	172	33 $\frac{1}{2}$	860	12 $\frac{1}{2}$	324
-10°	47 $\frac{1}{8}$	1204	8	203	46 $\frac{1}{2}$	1175	14	356	45 $\frac{1}{4}$	1150	20	508	-28°					36 $\frac{1}{8}$	924	6	152	33 $\frac{1}{8}$	841	12	305
-11°	46 $\frac{7}{8}$	1191	7 $\frac{7}{8}$	200	45 $\frac{3}{4}$	1162	13 $\frac{3}{4}$	353	44 $\frac{3}{4}$	1131	19 $\frac{3}{4}$	505	-29°					35 $\frac{3}{4}$	908	5 $\frac{3}{4}$	136	32 $\frac{3}{4}$	825	11 $\frac{3}{4}$	289
-12°	46 $\frac{1}{2}$	1181	7 $\frac{1}{2}$	197	45 $\frac{1}{2}$	1146	13 $\frac{1}{2}$	349	43 $\frac{3}{4}$	1115	19 $\frac{1}{2}$	502	-30°					35 $\frac{1}{2}$	895	4 $\frac{1}{2}$	118	31 $\frac{1}{2}$	810	10 $\frac{1}{2}$	270

ALTERNATIVE HEIGHTS

6" (152 M/M) HIGHER	(HIGH STAND WITH 6" (152 M/M) PLINTH)	ADD 6" (152 M/M) TO 'D' ABOVE	MAXIMUM RAKE	30°
3" (76 M/M) "	(MEDIUM " " 6" (152 M/M) ")	" 3" (76 M/M) " " "	"	25°
3" (76 M/M) LOWER	(MEDIUM STAND)	SUBTRACT 3" (76 M/M) FROM 'D' ABOVE	"	25°
6" (152 M/M) "	(LOW ")	" 6" (152 M/M) " " "	"	20°

INSTALLATION DIAGRAM FOR G.K. 21 OUTFIT

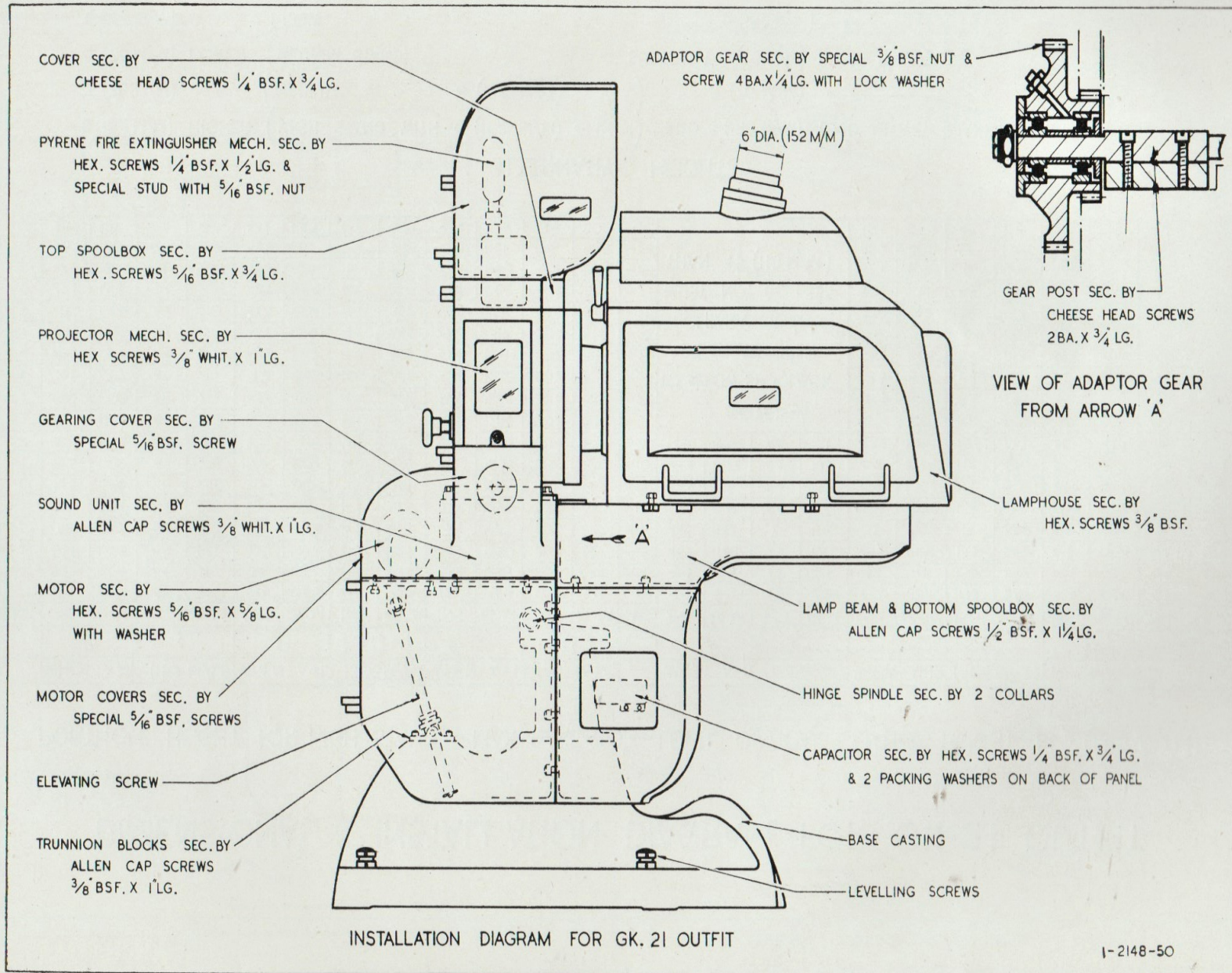
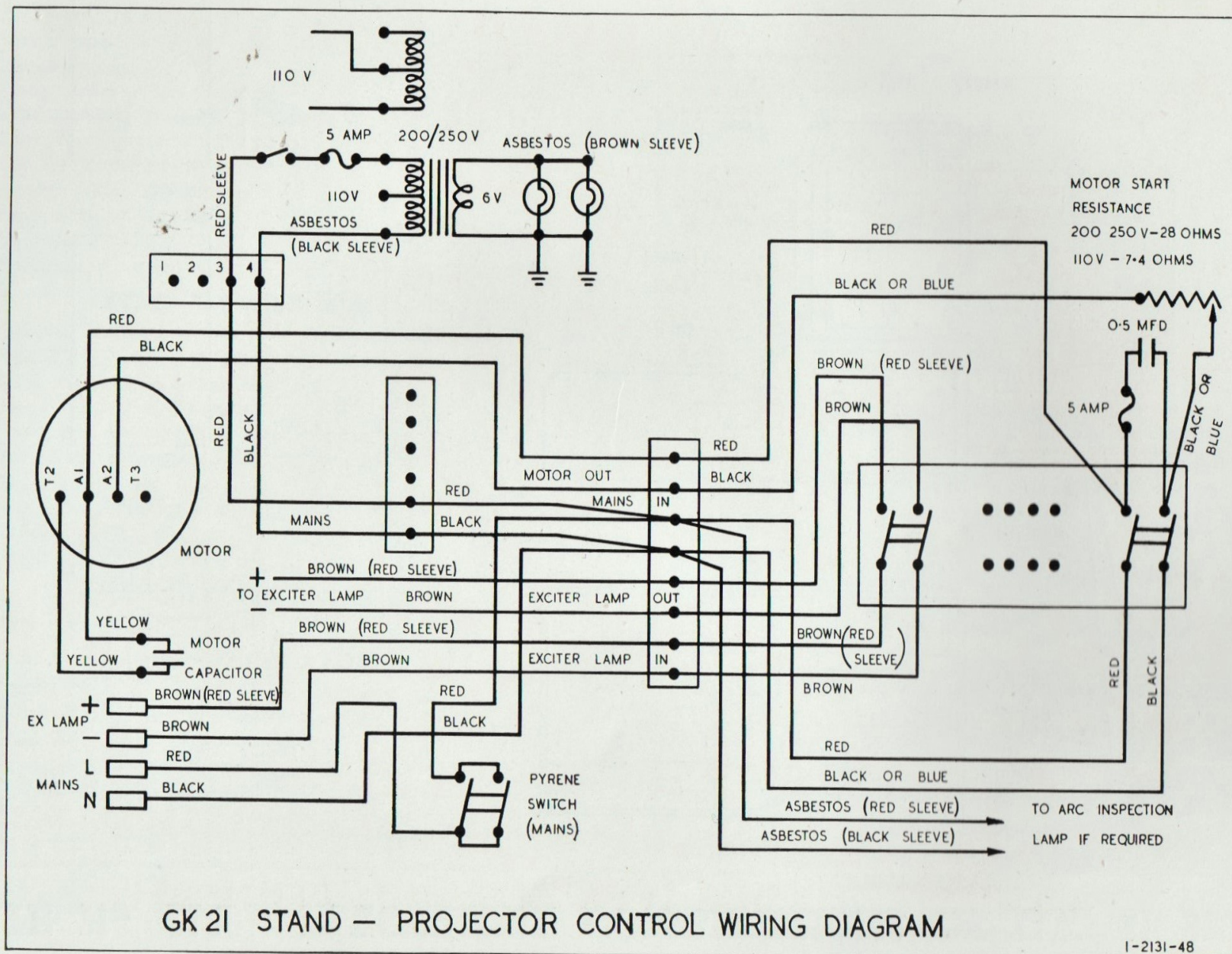


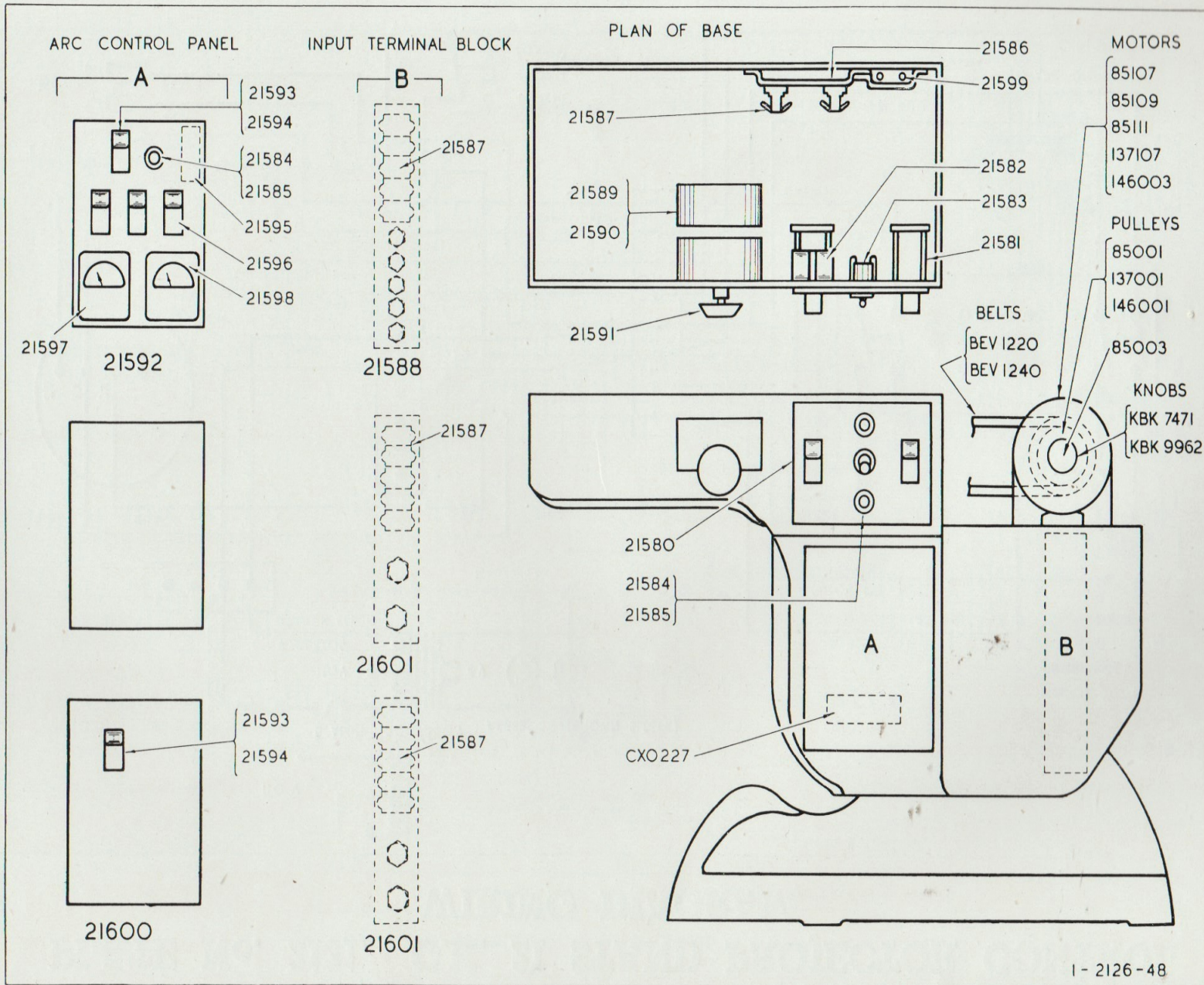
PLATE No. 2131. G.K. 21 STAND PROJECTOR CONTROL WIRING DIAGRAM



GK 21 STAND — PROJECTOR CONTROL WIRING DIAGRAM

1-2131-48

PLATE No. 2126. ELECTRICAL COMBINATIONS OF G.K. 21 STAND



B

- 21580 Panel, Control, Projector, Complete
 21581 Switch, Motor and Excitor (BAF. 80093B)
 21582 Condenser, 0.5 MFD. (BAF. 545)
 21583 Switch, Toggle, S.301, 250 volts
 21584 Fuseholder, Panel
 21585 Fuse, 5 ampere Glass Cartridge
 21586 Block, Terminal, Projector, Complete
 21587 Block, Terminal (BA.51121)
 21589 Rheostat, Motor, 200-250 volts
 21590 Rheostat, Motor, 110-120 volts
 21591 Knob, Moulded, for Rheostat
 21599 Condenser, 1 MFD

All above items are common to "A" and "B" Electrical Conditions

PARTS REQUIRED FOR (1)

- 21584 Fuseholder, Panel
 21585 Fuse, 5 ampere Glass Cartridge
 21588 Block, Terminal, Input, Complete
 21592 Panel, Arc Control, Complete
 *21593 Switch, Arc, 60 ampere, Complete, "Sanders"
 *21594 Switch, Arc, 60 ampere, Complete, Diamond "H"
 21595 Shunt, for Ammeter
 21596 Switch, Arc, 30 amperes
 21597 Voltmeter, 1/100 volts
 21598 Ammeter, 1/100 amperes

PARTS REQUIRED FOR (2)

- 21601 Block, Terminal, Input, Complete

PARTS REQUIRED FOR (3)

- 21593 Switch, Arc, 60 amperes, Complete, "Sanders"
 21594 Switch, Arc, 60 amperes, Complete, Diamond "H"
 21600 Panel, Arc, Control, Complete, "Sanders"
 21601 Block, Terminal, Input, Complete

*Note.—Please quote 60 ampere Switch Makers, i.e.—
 Diamond "H"—Black Moulded Base.
 "Sanders"—Fitted Ceramic Snuffers.

Complete Stand Wired for Varying Conditions Stated Below			Arc Control Panel A	Input Terminal Block B
Arc Control Panel, 60 ampere Switch, Selector Switches and Meters (1)	NP	21602	21592	21588
	P	21603		
Remote Arc Control No Control Panel (2)	NP	21604	Blank Panel	21601
	P	21605		
Arc Control Panel, 60 ampere Main Switch only (3)	NP	21606	21600	21601
	P	21607		

P—With Pyrene

NP—No Pyrene

MOTOR DRIVE ACCESSORIES

Rating	Motor	Capacitor	Pulley	Sleeve	Knob	V. Belt
110-115 V. 60 cycles	137107	CX. 0227	137001	85003	KBK. 7471	BEV. 1220
110-120 V. 40 cycles	146003	CX. 0227	146001	—	KBK. 9962	BEV. 1240
200-210 V. 50 cycles	85109	CX. 0227	85001	85003	KBK. 7471	BEV. 1220
220-230 V. 50 cycles	85107	CX. 0227	85001	85003	KBK. 7471	BEV. 1220
240-250 V. 60 cycles	85111	CX. 0227	85001	85003	KBK. 7471	BEV. 1220

PLATE No. 2132. G.K. 21 STAND—CHANGE OVER WIRING DIAGRAM FOR No. 1 MACHINE

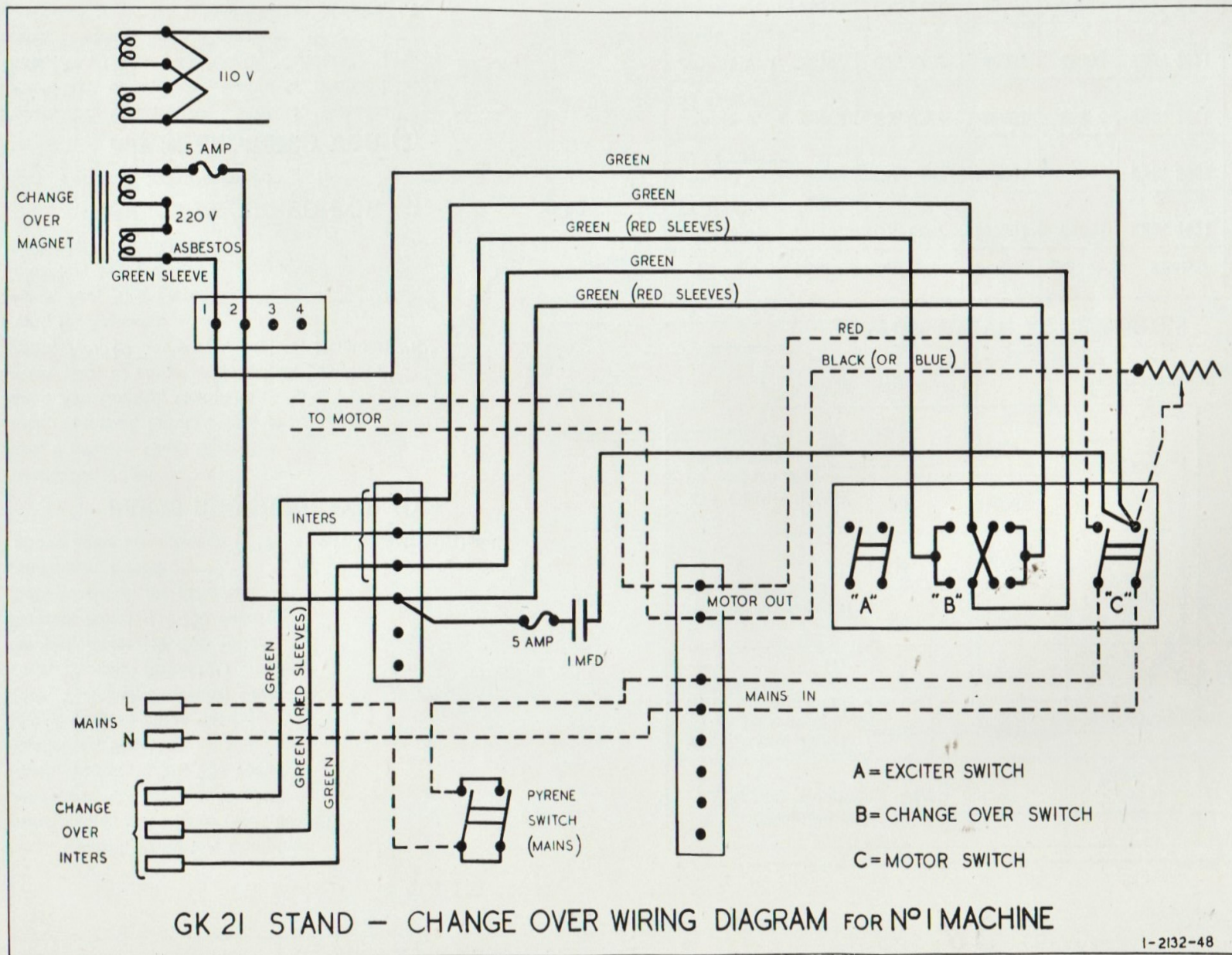
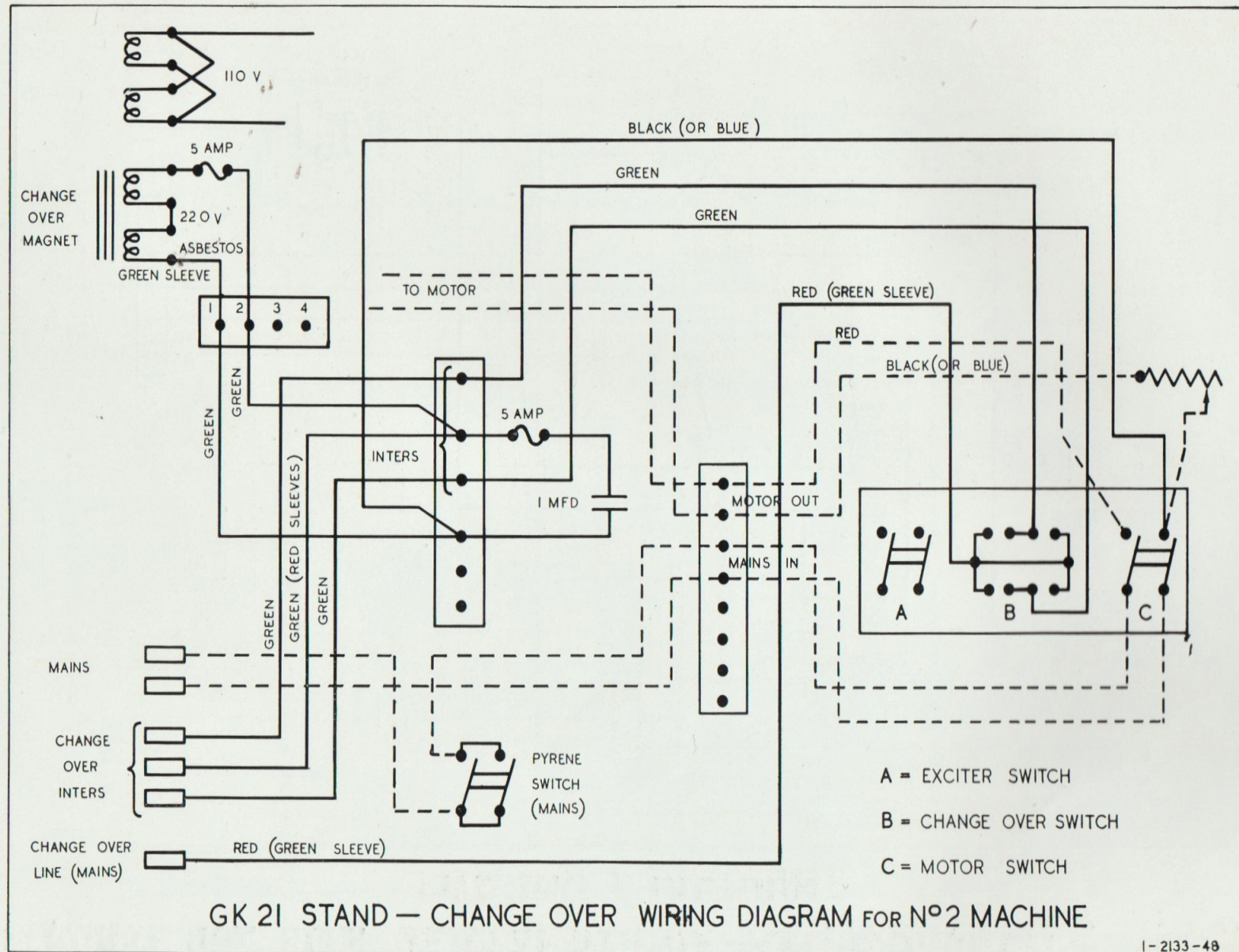


PLATE No. 2133. G.K. 21 STAND—CHANGEOVER WIRING DIAGRAM FOR No. 2 MACHINE

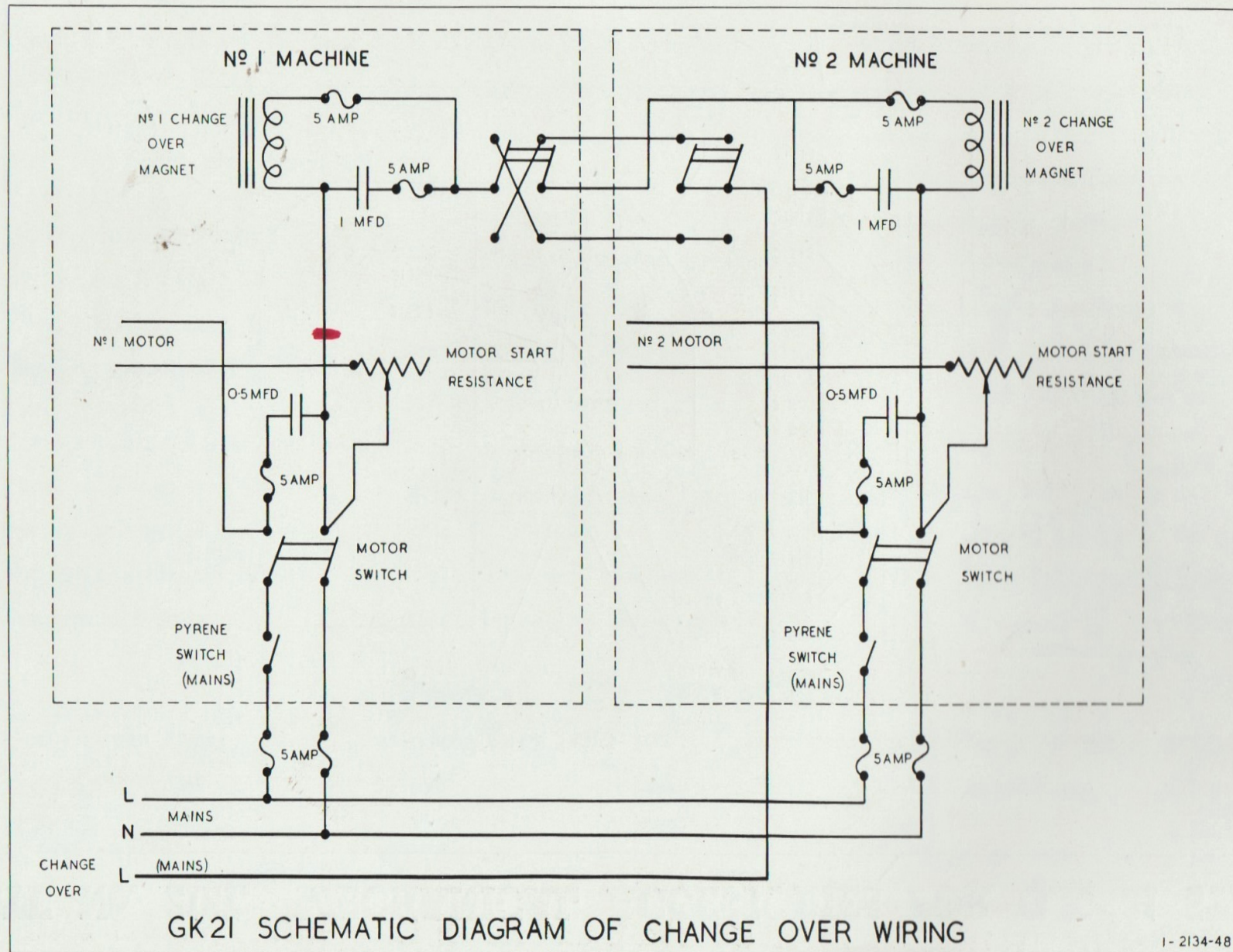


GK 21 STAND — CHANGE OVER WIRING DIAGRAM FOR N°2 MACHINE

1-2133-48

Page 11

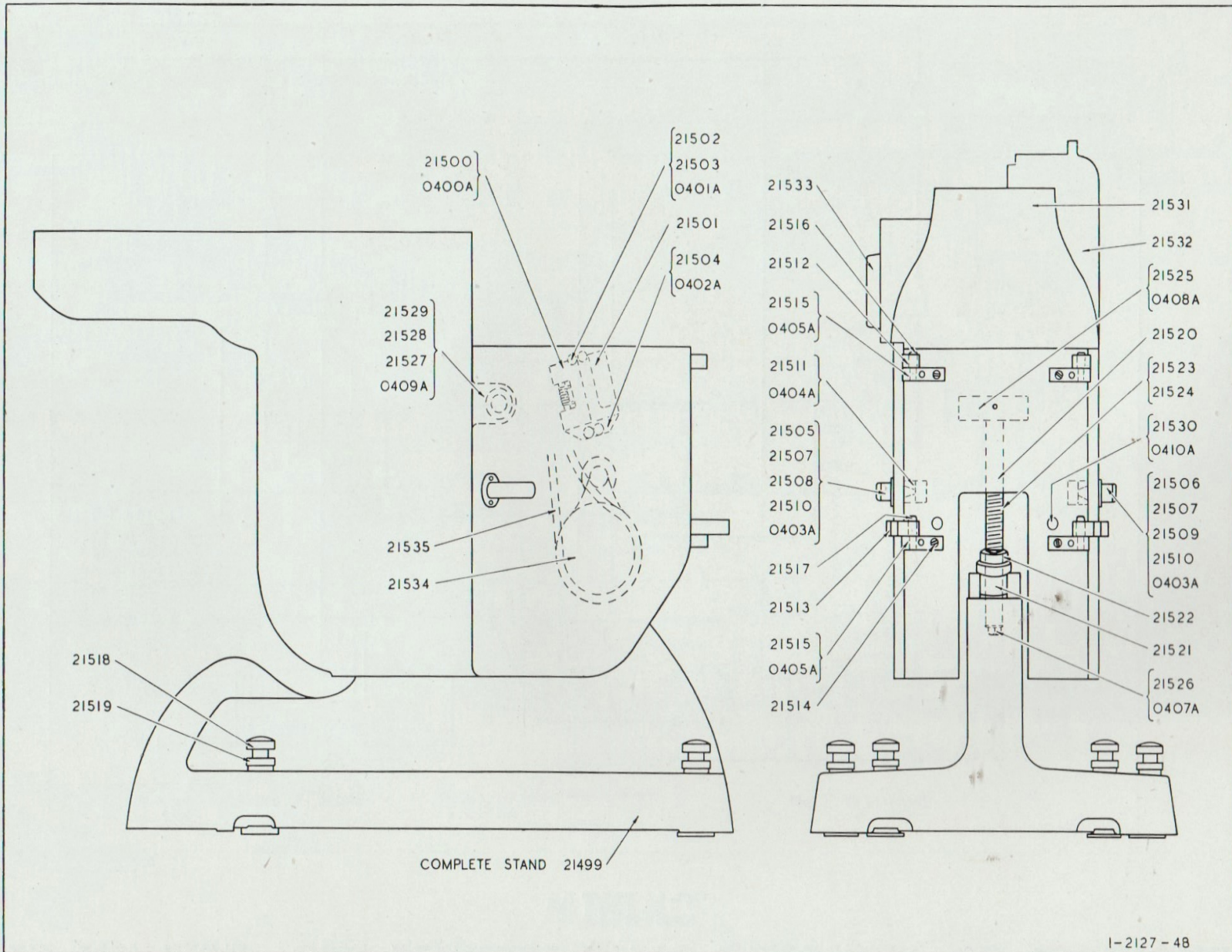
PLATE No. 2134. G.K. 21 SCHEMATIC DIAGRAM OF CHANGEOVER WIRING



GK21 SCHEMATIC DIAGRAM OF CHANGE OVER WIRING

1-2134-48

PLATE No. 2127. MECHANICAL ACCESSORIES FOR G.K. 21 STAND

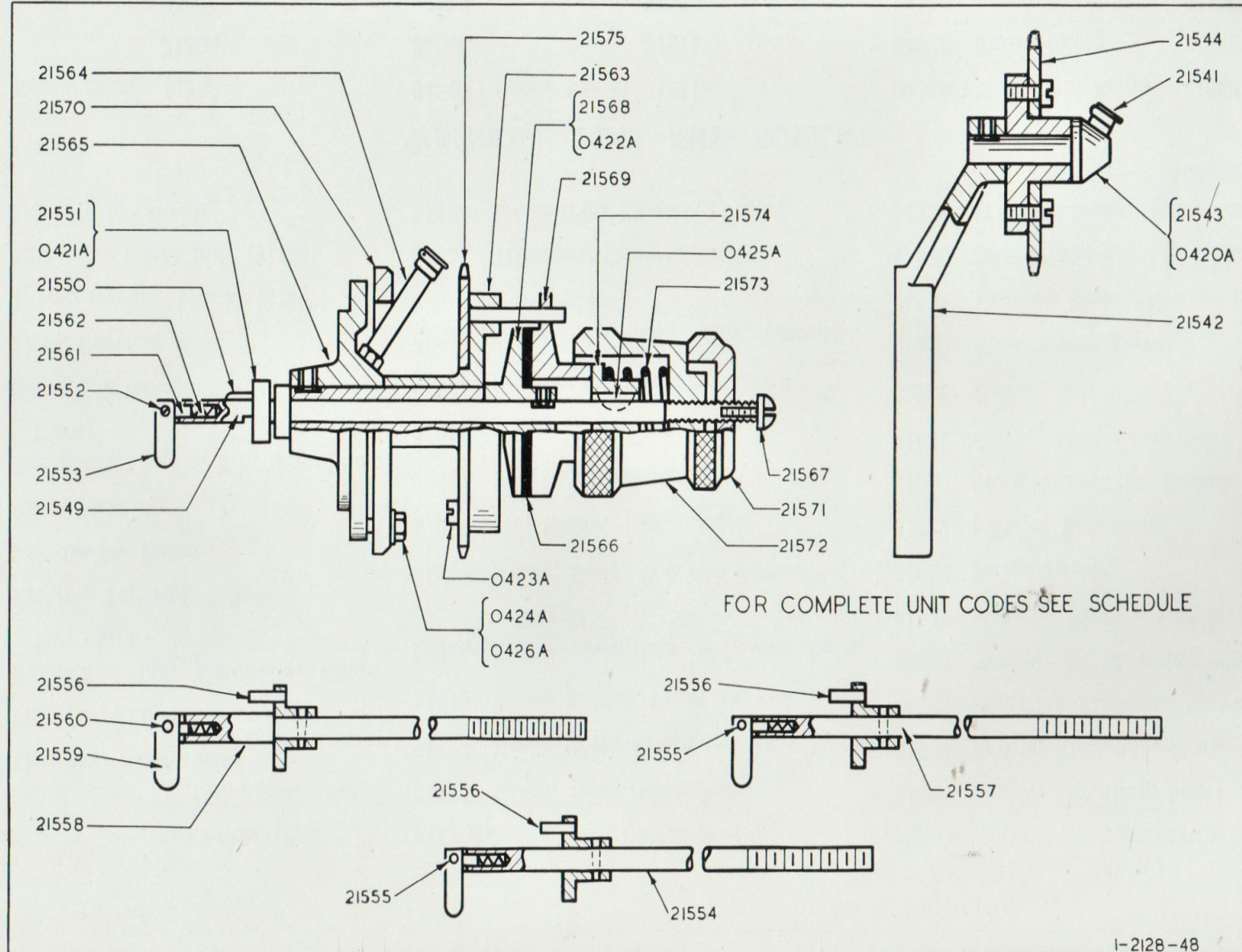


PART No.	DESCRIPTION	PART No.	DESCRIPTION	PART No.	DESCRIPTION
21499	Stand G.K. 21 Complete, less Electrical Accessories	21511	Catch, Door, Complete	21523	Screw, Elevating, Short
21500	Film Trap, Bottom, Complete	21512	Hinge, Top, Front and Rear Door	21524	Screw, Elevating, Long
21501	Body and Lid, Complete, Hinge Pin, etc.	21513	Hinge, Bottom, Front and Rear Door	21525	Pivot for Elevating Screw
21502	Rollers, Top and Bottom	21514	Screw, Securing Lid and Body Hinges	21526	Washer for Elevating Screw
21503	Spindle for Rollers	21515	Hinge, Body, Top and Bottom	21527	Spindle, Pivot
21504	Plate, Masking	21516	Pin, Hinge, Top	21528	Nut, Capstan
21505	Sneck and Handle, R.H. (Spool Box Door)	21517	Pin, Hinge, Bottom	21529	Flange, Retaining
21506	Sneck and Handle, L.H. (Rear Door)	21518	Screw, Levelling	21530	Stop, Rubber, for Bottom Hinge
21507	Plate, Escutcheon	21519	Locknut for Levelling Screw	21531	Cover, Motor and Belt
21508	Spring for Sneck, R.H. (21505)	21520	Screw, Elevating, and Trunnion, Complete	21532	Cover, Belt
21509	Spring for Sneck L.H., (21506)	21521	Trunnion, Complete	21533	Ring, Motor Cover
21510	Stop Pin for Sneck	21522	Locknut for Elevating Screw	21534	Take-up Assemblies see (page 16)
				21535	Chain Take-up, 146 Links
				21536	Window-Glass, Spool Box Lid

WASHERS, PINS AND SCREWS

0400A	Screw fixing	21500	0404A	Screw fixing	21511	0408A	Taper Pin fixing	21525
0401A	„	21503	0405A	„	21515	0409A	Screw fixing	21529
0402A	„	21504	0407A	„	21526	0410A	„	21530
0403A	„	21505, 21506, 21507						

PLATE No. 2128. BOTTOM TAKE-UP ASSEMBLIES FOR G.K. 21, 20 & 19 STANDS WITH TYPE 83 SOUNDHEADS



Q Note.—Bottom take-up assemblies are common to G.K. 21, 20 and 19

PART No.	DESCRIPTION	PART No.	DESCRIPTION	PART No.	DESCRIPTION
21540	Jockey, Take-up Assembly	21552	Pin, Pivot	21561	Plunger
21541	Oil Cup, Kingfisher	21553	Click End, Spool Spindle	21562	Spring, for Plunger
21542	Arm, Jockey	21554	Spindle, 9 mm. Spool, Complete, and Drive Collar	21563	Sprocket, Chain, Adaptor, Assembly
21543	Spindle, Jockey	21553	Click End, Spool Spindle	21564	Oil Pipe Assembly
21544	Sprocket, Tension, Complete, 25-teeth, Steel	21555	Pin, Pivot	21565	Take-up Flange Assembly
21545	Take-up, Bottom, Complete with 5/16 inch Spindle	21556	Pin, Spool Driving	21566	Disc, Clutch
21546	Take-up, Bottom, Complete with 9 mm. Spindle	21557	Spindle, 3/8 inch Spool, Complete and Drive Collar	21567	Screw, Stop
21547	Take-up, Bottom, Complete with 3/8 inch Spindle	21553	Click End, Spool Spindle	21568	Plate, Inner Clutch
21548	Take-up, Bottom, Complete with 1/2 inch Spindle.	21555	Pin, Pivot	21569	Clutch
21549	Spindle, 5/16 inch Spool, Complete and Collar	21556	Pin, Spool Driving	21570	Ring, Clamp
21550	Key, Spool Driving	21558	Spindle, 1/2 inch Spool, Complete and Drive Collar	21571	Nut, Special
21551	Collar, Spool Driving	21559	Click End, Spool Spindle	21572	Nut, Spring Tension
		21560	Pin, Pivot	21573	Spring
		21556	Pin, Spool Driving	21574	Collar, Spring
				21575	Wheel, Chain, 50-teeth, Steel

WASHERS, PINS AND SCREWS

0420A	Screw fixing	21543	0423A	Screw fixing	21575	0425A	No. 2 Woodruff Key
0421A	"	21551	0424A	"	21570	0426A	Washer for 21570
0422A	"	21568					

Part 2

THE G.K. 20 & 19 STANDS

The Stand incorporates a heavy cast iron pedestal base fitted with screws. A packing piece is available for inserting below a cap, which is fitted with a pivot bar at the front end carrying the main support casting and, at the rear end, a pivoted trunnion block through which the elevating screw passes. The main support casting carries the lamp beam, soundhead and driving motor. The motor, driving belts and projector drive gearing are enclosed by quickly detachable cast guards.

Dependent upon whether the packing piece is inserted, the level optical centre height of the equipment may be 46 inches or 49 inches. The maximum tilt is, of course, dependent upon the height of the centre column, and this, together with the required port-hole height when the equipment is operating at a given rake and in a fixed position relative to the front wall of the operating box, is given in the table on Drawings 1943/49 and 1944/49.

N.B.—When referring to these tables particular note should be taken of the 46 inches and 49 inches level optical centre height.

The Stand is completely wired in the factory for soundhead lamp and projector, and all wiring terminates at a distribution board inside and at the front end of the box casting situated on the non-operating side of the equipment. Cable entries are also conveniently arranged in the front end of this casting, thus installation wiring can be neatly and readily carried out. All switches, etc., are suitably positioned in the boxes mounted on the operating side of the stand, and include rheostat for the driving motor, changeover switch, motor switch, fuses and main arc switch. Variations in this arrangement are available according to exact requirements, and ballast switches together with meters may be fitted if required. Pyrene Fire Extinguisher Equipment may also be fitted as optional equipment.

For Stand Wiring see Plates Nos. 1938 and 1939, being wiring for Nos. 1 and 2 Machines when Pyrene equipment is *not* fitted. Plates Nos. 1936 and 1937 show the wiring for Nos. 1 and 2 Machines when Pyrene equipment is fitted. Plate No. 1940 is the wiring for the Arc Control Box, and Plate No. 1941 is the Installation Wiring Diagram.

In addition the Stand is available incorporating a Universal nose mounting suitable for any soundhead, also lamp-rails for the mounting of other makes of lamp. When these are supplied wiring arrangements are made accordingly on installation.

The bottom spool box is of sheet steel construction and is mounted on a substantial cast arm secured to the main support casting. A chain-driven "Take-up" complete with jockey sprocket is provided for the spool spindle and a readily detachable cast guard completely encloses the drive.

PLATE No. 1940. WIRING DIAGRAM FOR G.K. 20 & 19 ARC CONTROL BOX

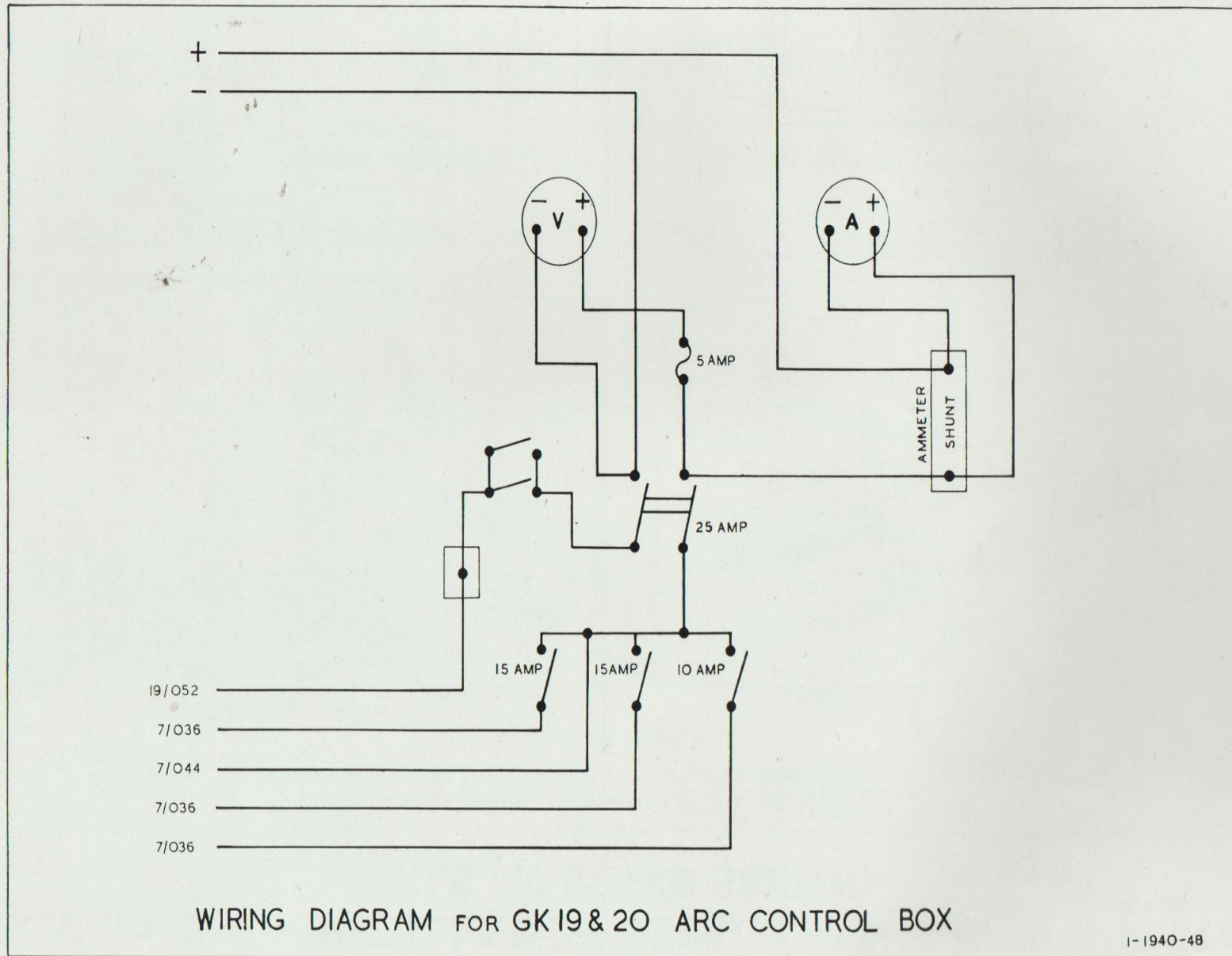


PLATE No. 1943. INSTALLATION DETAILS FOR G.K. 20 & 19 STAND (G.K. 20 STAND SHEWN)

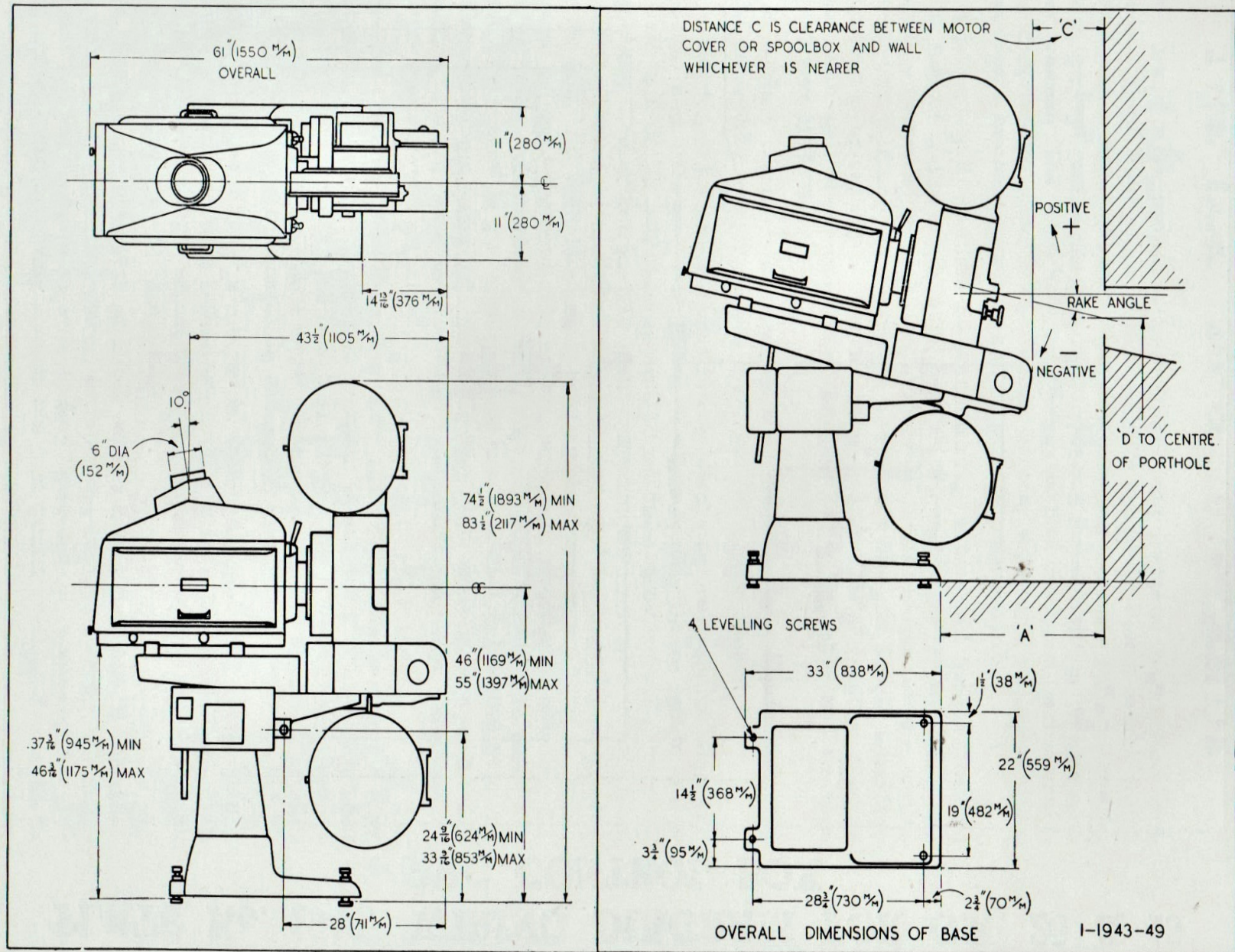
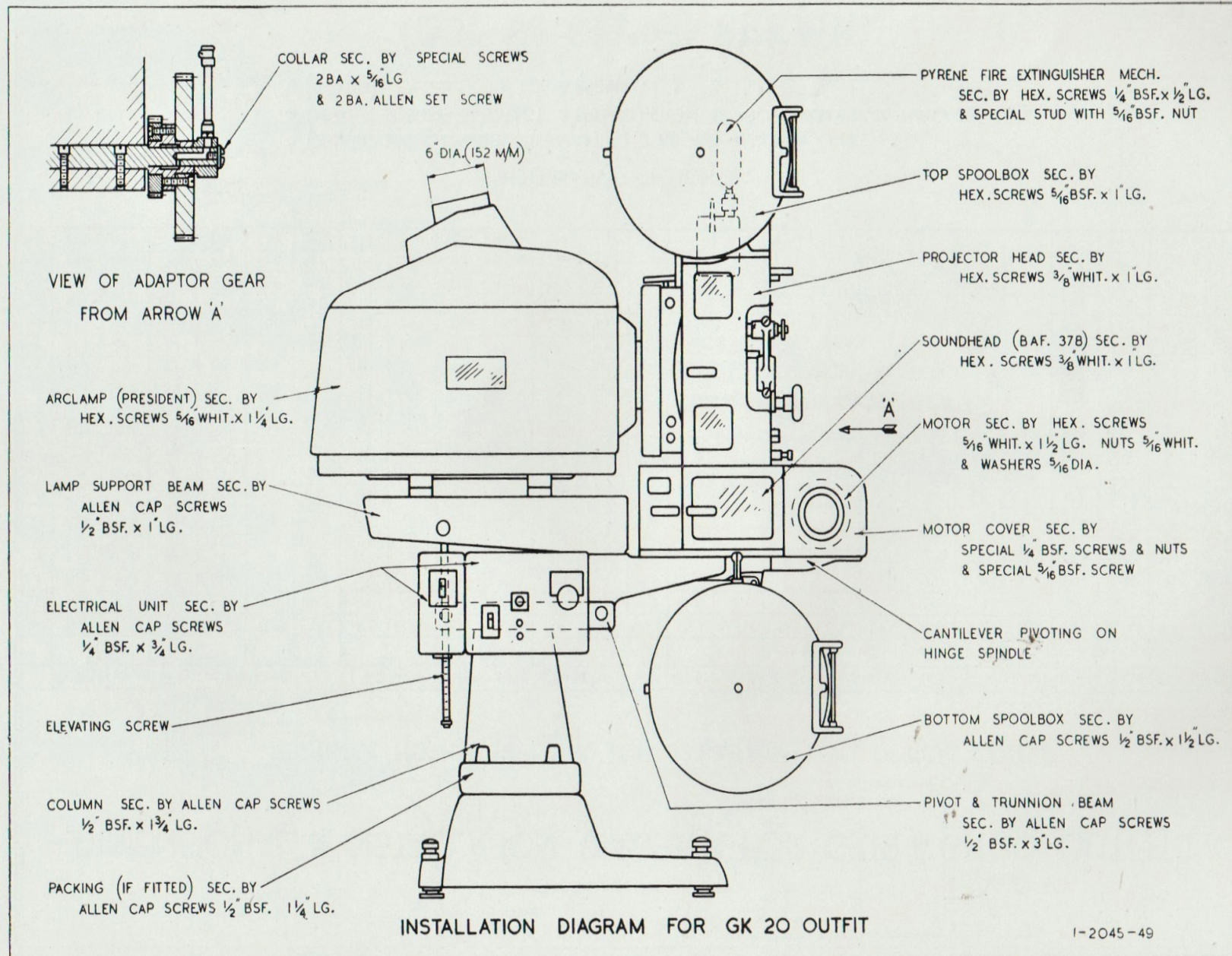
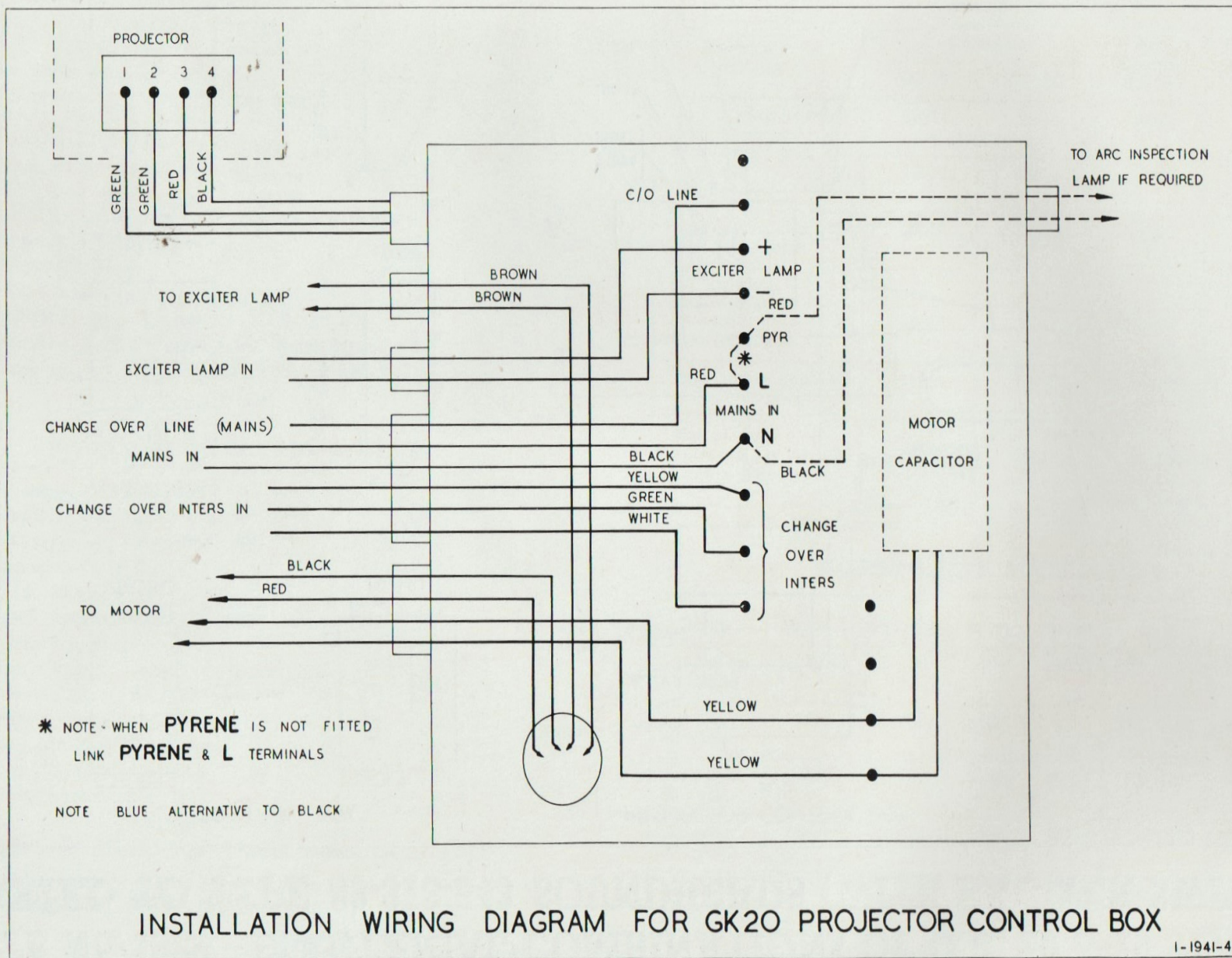


PLATE No. 2045. INSTALLATION DIAGRAM FOR G.K. 20 OUTFIT



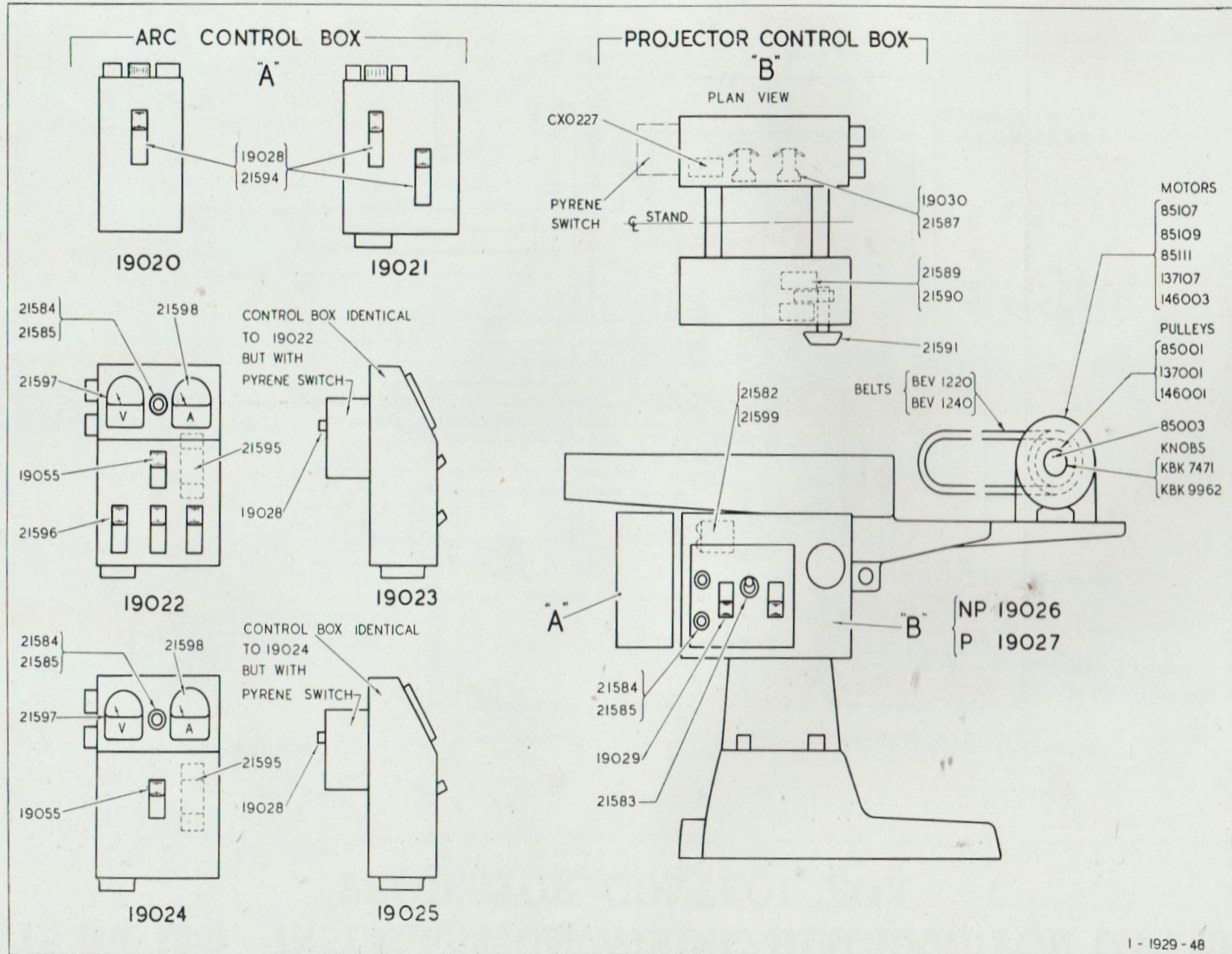
NOTE.—Ball-bearing Adaptors also supplied.

PLATE No. 1941. INSTALLATION WIRING DIAGRAM FOR G.K. 20 & 19 PROJECTOR CONTROL BOX



I-1941-48

PLATE No. 1929. ELECTRICAL COMBINATIONS OF G.K. 20 & 19 STANDS ADAPTED TO TYPE 83-378-543 SOUNDHEADS (WITH EXCITER SWITCH)



ARC CONTROL BOX "A"

- 19021 Switchbox, Arc, Complete (Main Switch, P.)
- *19028 Switch, Arc, 60 amperes, "Sanders"
- *21594 Switch Arc, 60 amperes, Diamond "H"
- 19020 Switchbox, Arc, Complete, as 19021 but NP.
- 19022 { Switchbox, Arc, Complete (Main Switch)
Selector Switches, Meters, NP.
- 19055 Switch, Arc, 60 amperes, Complete
- 21596 Switch, 30 amperes, Diamond "H"
- 21595 Shunt, for Ammeter
- 21597 Voltmeter, 0/100 volts
- 21598 Ammeter, 0/100 amperes
- 21584 Fuseholder, Panel
- 21585 Fuse, 5 ampere Glass Cartridge
- 19023 Switchbox, Arc, Complete, as 19022 but with P.
- 19024 Switchbox, Arc, Complete (Main Switch Meters, NP.)
- 19025 Switchbox, Arc, Complete, as 19024 but with P.

PROJECTOR CONTROL BOX "B"

- 19026 Switchbox, Complete, NP.
- 19027 Switchbox, Complete, as 19026 but P.
- 21582 Condenser, 0.5 MFD. (BAF. 545)
- 21599 Condenser, 1 MFD.
- 19029 Switch, 30 amperes
- 21583 Switch, Toggle, S.301, 250 volts
- 21584 Fuseholder, Panel
- 21585 Fuse, 5 ampere Glass Cartridge
- 21589 Rheostat, Motor, 200/250 volts
- 21590 Rheostat, Motor, 110/120 volts
- 21591 Knob, Moulded, for Rheostat
- 19030 Panel, Terminal, Complete
- 21587 Block, Terminal (BA. 51121)

* Note.—Please quote 60 ampere Switch Makers, i.e.—

Diamond "H"—Black Moulded Base
"Sanders"—Fitted Ceramic Snuffers

Complete GK. 19 and 20 Stands with Electrical Accessories Consisting of					
Electrical Conditions		Complete		Arc Control Box A	Projector Control Box B
		GK. 19	GK. 20		
Arc Control Box with 60 ampere Main Switch and Projector Control Box	NP.	19014	20014	19020	19026
	P.	19015	20015	19021	19027
Arc Control Box with 60 ampere Switch, Selec- tor Switches and Meters. Projector Control Box	NP.	19016	20016	19022	19026
	P.	19017	20017	19023	19027
Arc Control Box with 60 ampere Switch and Meters Projector Control Box	NP.	19018	20018	19024	19026
	P.	19019	20019	19025	19027

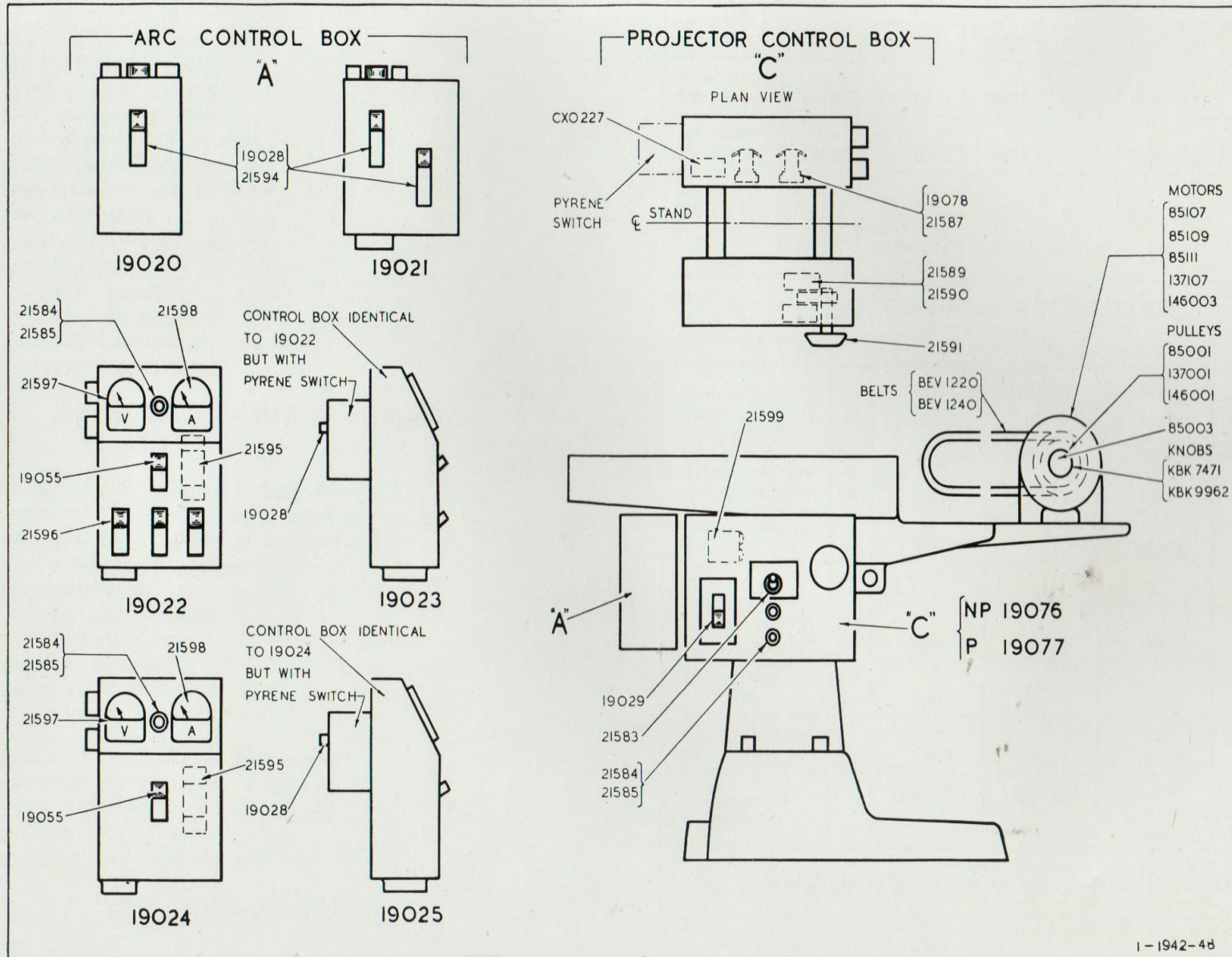
P—With Pyrene

NP.—No Pyrene

MOTOR DRIVE ACCESSORIES

Rating	Motor	Capacitor	Pulley	Sleeve	Knob	V. Belt
110-115 V. 60 cycles	137107	CX. 0227	137001	85003	KBK. 7471	BEV. 1220
110-120 V. 40 cycles	146003	CX. 0227	146001	—	KBK. 9962	BEV. 1240
200-210 V. 50 cycles	85109	CX. 0227	85001	85003	KBK. 7471	BEV. 1220
220-230 V. 50 cycles	85107	CX. 0227	85001	85003	KBK. 7471	BEV. 1220
240-250 V. 50 cycles	85111	CX. 0227	85001	85003	KBK. 7471	BEV. 1220

PLATE No. 1942. ELECTRICAL COMBINATIONS OF G.K. 20 & 19 STANDS ADAPTED TO G.K. 83-378-543 SOUNDHEADS (WITHOUT EXCITER SWITCH)



ARC CONTROL BOX "A"

- 19021 Switchbox, Arc, Complete (Main Switch-P)
- *19028 Switch, Arc, 60 amperes, "Sanders"
- *21594 Switch, Arc, 60 amperes, Diamond "H"
- 19020 Switchbox, Arc, Complete, as 19021 but NP.
- 19022 { Switchbox, Arc, Complete (Main Switch)
Selector Switches, Meters, NP.
- 19055 Switch, Arc, 60 amperes, Complete
- 21596 Switch, 30 amperes, Diamond "H"
- 21595 Shunt for Ammeter
- 21597 Voltmeter, 0/100 volts.
- 21598 Ammeter, 0/100 amperes
- 21584 Fuseholder, Panel
- 21585 Fuse, 5 ampere Glass Cartridge
- 19023 Switchbox, Arc, Complete, as 19022 but with P.
- 19024 Switchbox, Arc, Complete (Main Switch Meters, NP.)
- 19025 Switchbox, Arc, Complete, as 19024 but with P.

PROJECTOR CONTROL BOX "C"

- 19076 Switchbox, Complete, NP.
- 19077 Switchbox, Complete, as 19076 but P.
- 21599 Condenser, 1 MFD.
- 19029 Switch, 30 amperes
- 21583 Switch, Toggle, S.301, 250 volts.
- 21584 Fuseholder, Panel
- 21585 Fuse, 8 ampere Glass Cartridge
- 21589 Rheostat, Motor, 200/250 volts.
- 21590 Rheostat, Motor, 110/120 volts
- 21591 Knob, Moulded, for Rheostat
- 19078 Panel, Terminal, Complete
- 21587 Block, Terminal (BA. 51121)

* Note.—Please quote 60 ampere Switch Makers, i.e.—

Diamond "H"—Black Moulded Base
"Sanders"—Fitted Ceramic Snuffers

Complete G.K. 19 and 20 Stands, with Electrical Accessories, Consisting of					
Electrical Conditions		Complete		Arc Control Box "A"	Projector Control Box "C"
		GK. 19	GK. 20		
Arc Control Box with 60 ampere Main Switch and Projector Control Box	NP.	19070	20070	19020	19076
	P.	19071	20071	19021	19077
Arc Control Box with 60 ampere Switch Selector Switches and Meters, Projector Control Box	NP.	19072	20072	19022	19076
	P.	19073	20073	19023	19077
Arc Control Box with 60 ampere Switch & Meters, Projector Control Box	NP.	19074	20074	19024	19076
	P.	19075	20075	19025	19077

P—With Pyrene

NP.—No Pyrene

MOTOR DRIVE ACCESSORIES

Rating	Motor	Capacitor	Pulley	Sleeve	Knob	V. Belt
110-115 V. 60 cycles	137107	CX. 0227	137001	85003	KBK. 7471	BEV. 1220
110-120 V. 40 cycles	146003	CX. 0227	146001	—	KBK. 9962	BEV. 1240
200-210 V. 50 cycles	85109	CX. 0227	85001	85003	KBK. 7471	BEV. 1220
220-230 V. 50 cycles	85107	CX. 0227	85001	85003	KBK. 7471	BEV. 1220
240-250 V. 50 cycles	85111	CX. 0227	85001	85003	KBK. 7471	BEV. 1220

PLATE No. 1937. WIRING DIAGRAM FOR G.K. 20 & 19 FITTED WITH PYRENE EQUIPMENT. No. 2 MACHINE

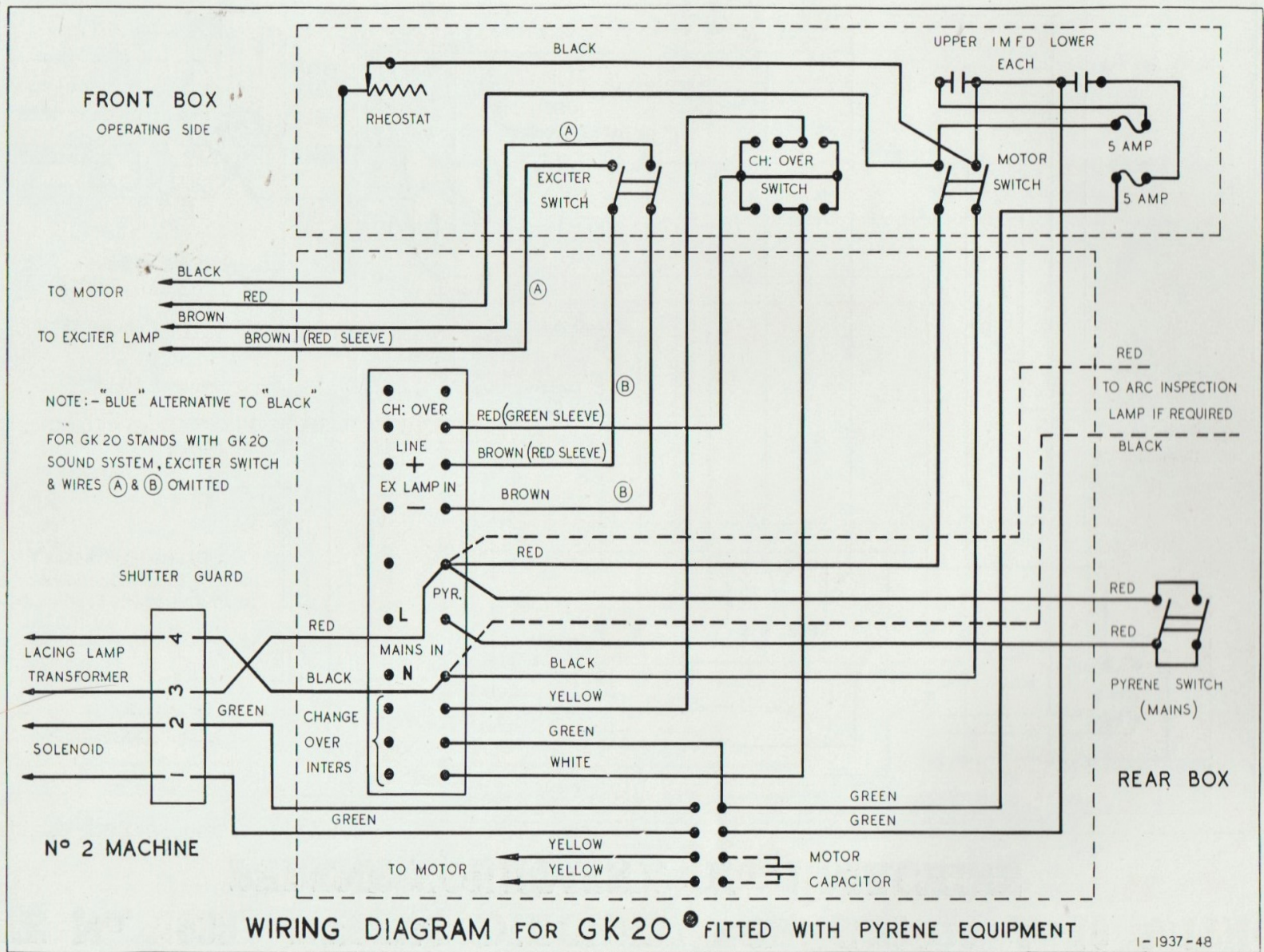


PLATE No. 1938. WIRING DIAGRAM FOR G.K. 20 & 19 WITHOUT PYRENE EQUIPMENT. No. 1 MACHINE

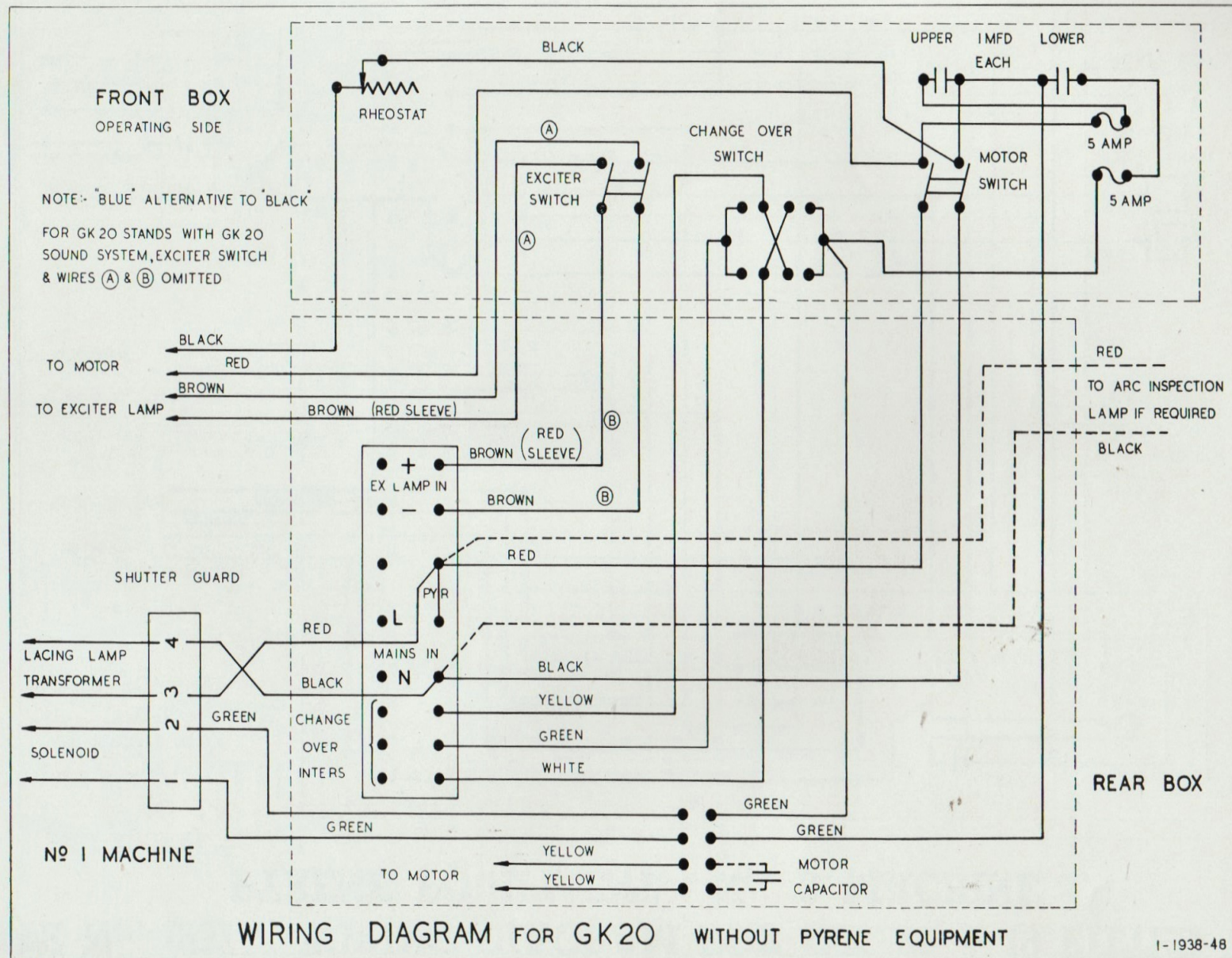
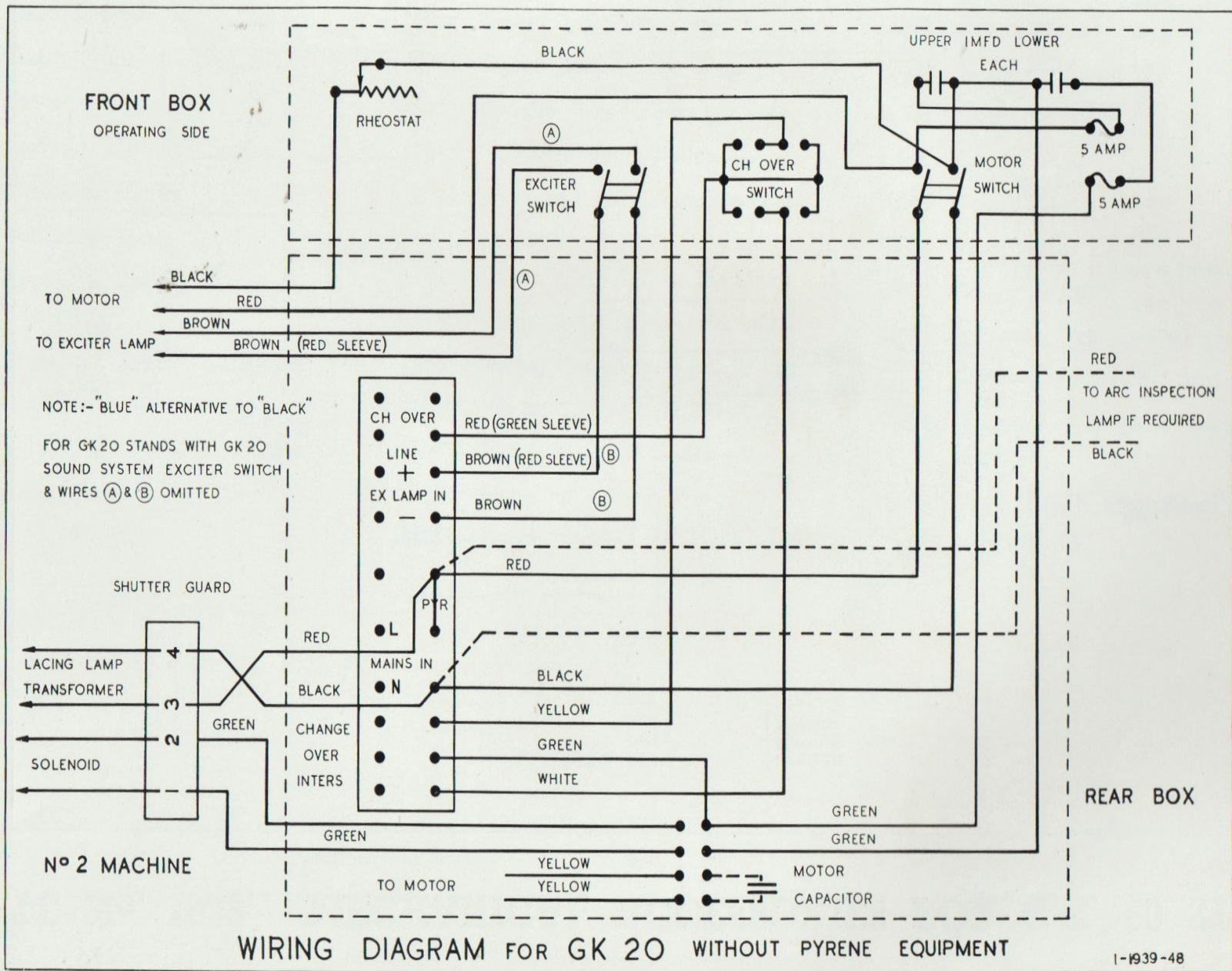
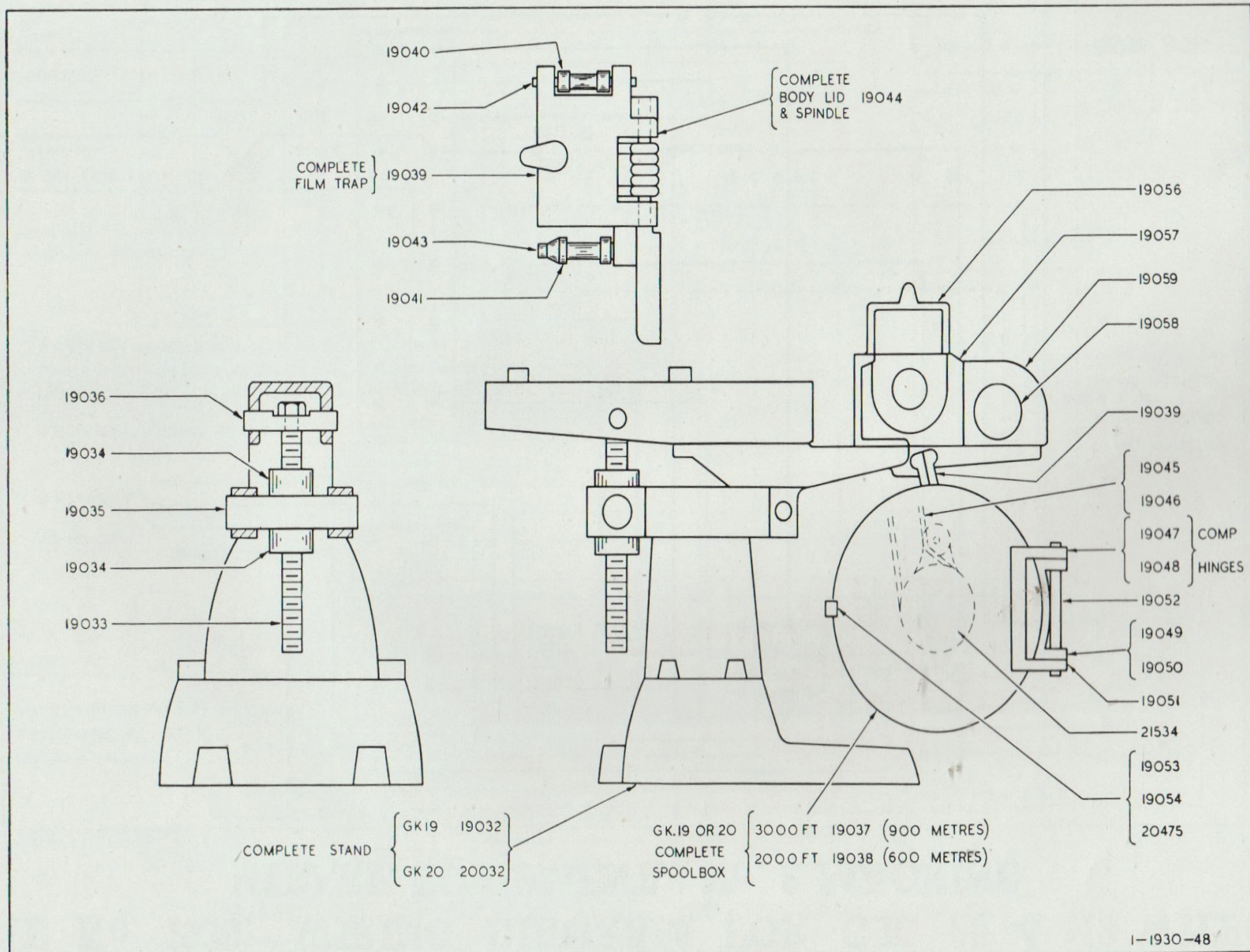


PLATE No. 1939. WIRING DIAGRAM FOR G.K. 20 & 19 WITHOUT PYRENE EQUIPMENT. No. 2 MACHINE



1-1939-48

PLATE No. 1930. MECHANICAL ACCESSORIES FOR G.K. 20 STAND



PART No.	DESCRIPTION	PART No.	DESCRIPTION	PART No.	DESCRIPTION
19032	Stand, Complete, G.K. 19	19040	Roller, Top Film Trap	19052	Pin, Hinge
20032	Stand, Complete, G.K. 20	19041	Roller, Bottom Film Trap	19053	Sneck for Spool Box
19033	Screw, Elevating	19042	Spindle, Top Roller	19054	Catch for Spool Box Lid
19034	Locknut, Elevating Screw	19043	Spindle, Bottom Roller	19056	Cover, Gear
19035	Trunnion, Lower	19044	Body and Lid, Complete with Spindle	19057	Cover, Belt
19036	Trunnion, Top	19045	Chain, 2,000 ft. Box, 144 Links	19058	Ring, Motor Cover
19037	Spoolbox, Bottom, Complete, 3,000 ft.	19046	Chain, 3,000 ft. Box, 152 Links	19059	Cover, Motor
19038	Spoolbox, Bottom, Complete, 2,000 ft.	19047	Hinge, Complete, 3,000 ft. Box	19067	Spoolbox, Bottom, Complete, 17½ inches diameter, 2,000 ft.
21534	Take-up Assemblies, see page 16.	19048	Hinge, Complete, 2,000 ft. Box	19068	Hinge for 17½ inches diameter Spool Box
19039	Trap, Film, Bottom Spool, Complete	19049	Hinge for 2,000 ft. Box	19069	Chain for 17½ inches Spool Box, 148 Links
		19050	Hinge for 3,000 ft. Box		
		19051	Hinge for 2,000 and 3,000 ft. Lids		

Part 3

THE G.K. 18 STAND

The Stand incorporates a heavy cast iron pedestal base fitted with levelling screws. Packing pieces are available for inserting below a cap which is fitted with a pivot bar at the front end carrying the nose bracket and rails, and at the rear end a pivoted trunnion block through which the elevating screw passes. The driving motor is carried on a switch box situated in front and secured underneath the soundhead. The switch box, which is wired complete as a unit, houses a motor switch, rheostat and motor capacitor, and provision is made for mains entry to terminate at a block inside the box. The driving belts and projector drive gearing are totally enclosed by means of quickly detachable cast guards.

Dependent upon which packing piece is inserted, the level optical centre height of the equipment may be $46\frac{1}{2}$ inches, $49\frac{1}{2}$ inches, $52\frac{1}{2}$ inches or $55\frac{1}{2}$ inches. The maximum tilt is, of course, dependent upon the height of the centre column and this, together with the required port-hole height when the equipment is operating at a given rake and at a fixed position relative to the front wall of the operating box, is given by reference to Drawings 1/1802/49 and 1/1803/49.

The equipment is normally supplied with a standard arc switch and bracket mounted at the end of the rails, but this is replaced to house additional switches when the equipment is fitted with Pyrene Fire Extinguisher.

The bottom spool box is of sheet steel construction and is mounted on a substantial cast arm, and a belt-driven "Take-up" complete with jockey pulley is provided for the spool spindle.

PLATE No. 1802. INSTALLATION DETAILS FOR G.K. 18 STAND

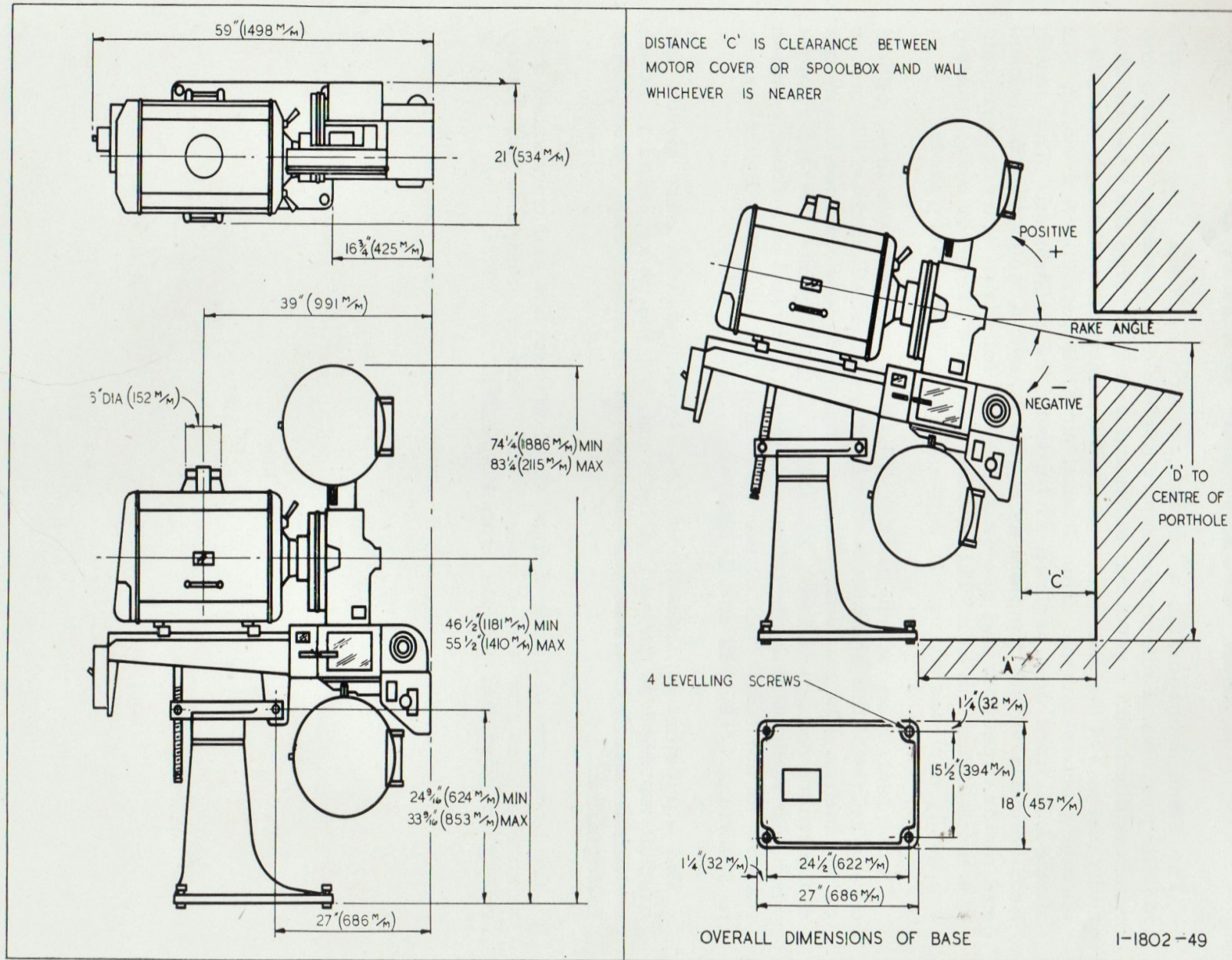


PLATE No. 1803. DIMENSIONAL AND INSTALLATION DIAGRAM FOR G.K. 18 OUTFIT

DIMENSIONAL & INSTALLATION DIAGRAM FOR GK 18 OUTFIT

PORTHOLE HEIGHTS OF STAND FOR 52 1/2" (1333 M/M) LEVEL OPTICAL CENTRE

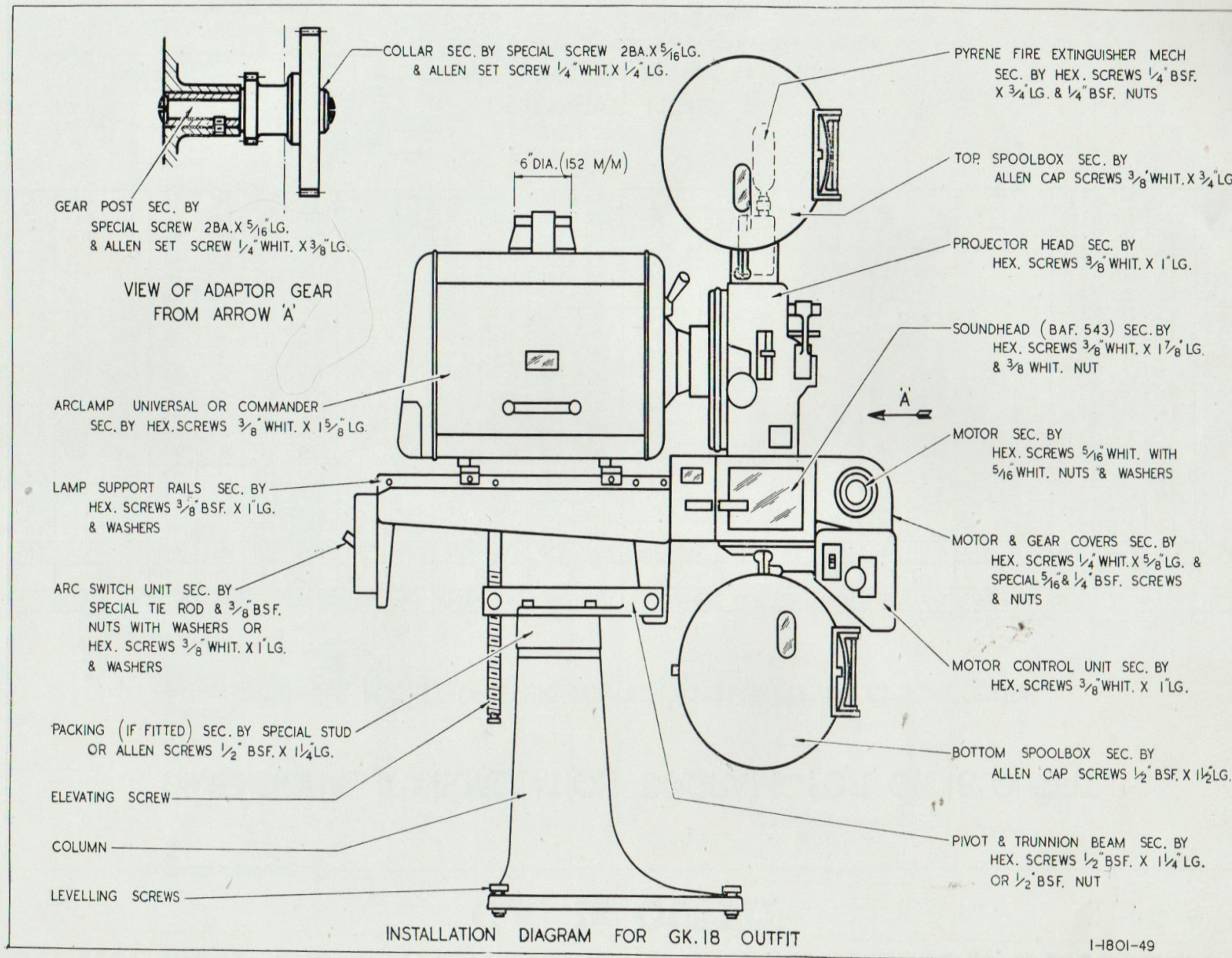
RAKE	WHEN A=26"(660 M/M)				WHEN A=32"(819 M/M)				WHEN A=38"(965 M/M)				RAKE	WHEN A=26"(660 M/M)				WHEN A=32"(819 M/M)				WHEN A=38"(965 M/M)			
	D		C		D		C		D		C			D		C		D		C		D		C	
	INS	M/M	INS	M/M	INS	M/M	INS	M/M	INS	M/M	INS	M/M		INS	M/M	INS	M/M	INS	M/M	INS	M/M	INS	M/M	INS	M/M
+5°	55 1/2	1403	9 1/2	251	55 1/2	1416	15 1/2	403	56 1/2	1428	21 1/2	556	-13°					43 1/2	1114	12 1/2	321	42 1/2	1079	18 1/2	474
+4°	54 1/2	1390	9 1/2	248	55	1397	15 1/2	400	55 1/2	1409	21 1/2	553	-14°					43 1/2	1095	12	305	41 1/2	1057	18	458
+3°	54 1/8	1374	9 1/8	244	54 1/8	1381	15 1/8	396	54 1/8	1387	21 1/8	549	-15°					42 1/2	1079	11 1/2	286	40 1/2	1038	17 1/2	439
+2°	53 1/2	1358	9 1/2	241	53 1/2	1365	15 1/2	393	53 1/2	1368	21 1/2	546	-16°					41 1/2	1060	10 1/2	270	40	1016	16 1/2	423
+1°	53	1346	9 1/8	238	53	1346	15 3/8	390	53 1/8	1349	21 1/8	543	-17°					41	1041	10	254	39 1/2	997	16	407
0°	52 1/2	1333	9 1/4	235	52 1/2	1333	15 1/4	387	52 1/2	1333	21 1/4	540	-18°					40 1/4	1022	9 3/8	238	38 3/8	974	15 3/8	391
-1°	52	1320	9 1/8	232	52	1320	15 1/8	384	51 7/8	1317	21 1/8	537	-19°					39 1/2	1006	8 1/2	222	37 3/8	955	14 1/2	375
-2°	51 1/2	1308	9	229	51 1/2	1301	15	381	51 1/8	1298	21	534	-20°					38 7/8	987	8 1/8	206	36 3/8	933	14 1/8	359
-3°	50 3/4	1292	8 7/8	225	50 3/8	1285	14 7/8	378	50 3/8	1279	20 7/8	530	-21°					38 1/2	968	7 1/2	190	35 3/8	904	13 1/2	343
-4°	50 1/4	1276	8 7/8	225	50	1270	14 7/8	378	49 1/2	1257	20 7/8	530	-22°									35	889	12 7/8	327
-5°	49 3/4	1263	8 3/8	219	49 1/4	1251	14 3/8	371	48 3/4	1238	20 3/8	524	-23°									34 1/8	866	12 1/4	311
-6°	49 1/2	1247	8 1/2	216	48 3/8	1235	14 1/2	368	48	1219	20 1/2	521	-24°									33 1/8	847	11 3/4	298
-7°	48 3/8	1235	8 3/8	213	47 7/8	1216	14 1/8	365	47 1/8	1197	20 3/8	518	-25°									32 3/8	822	11 1/8	283
-8°	48 1/8	1222	8 3/8	213	47 1/4	1200	14 1/8	365	46 1/2	1181	20 3/8	518	-26°									31 1/2	800	10 5/8	270
-9°	47 1/2	1206	8 1/4	210	46 1/2	1184	14 1/4	362	45 3/8	1158	20 1/4	515	-27°									30 3/8	777	10 1/8	257
-10°	46 7/8	1190	8 1/8	206	45 7/8	1165	14 1/8	358	44 1/2	1136	20 1/8	511	-28°									29 1/2	755	9 1/2	241
-11°	46 1/2	1174	8	203	45 1/2	1149	14	355	44 1/8	1120	20	508	-29°									28 7/8	733	9	229
-12°	45 1/2	1162	7 1/2	184	44 1/2	1130	13 1/2	336	43 1/2	1098	19 1/2	489	-30°									28 1/8	714	8 1/2	216

NOTE:—
TO ALLOW SPOOLBOX DOOR TO
OPEN CLEARANCE 'C' SHOULD
NOT BE LESS THAN 7"(178 M/M)

ALTERNATIVE HEIGHTS

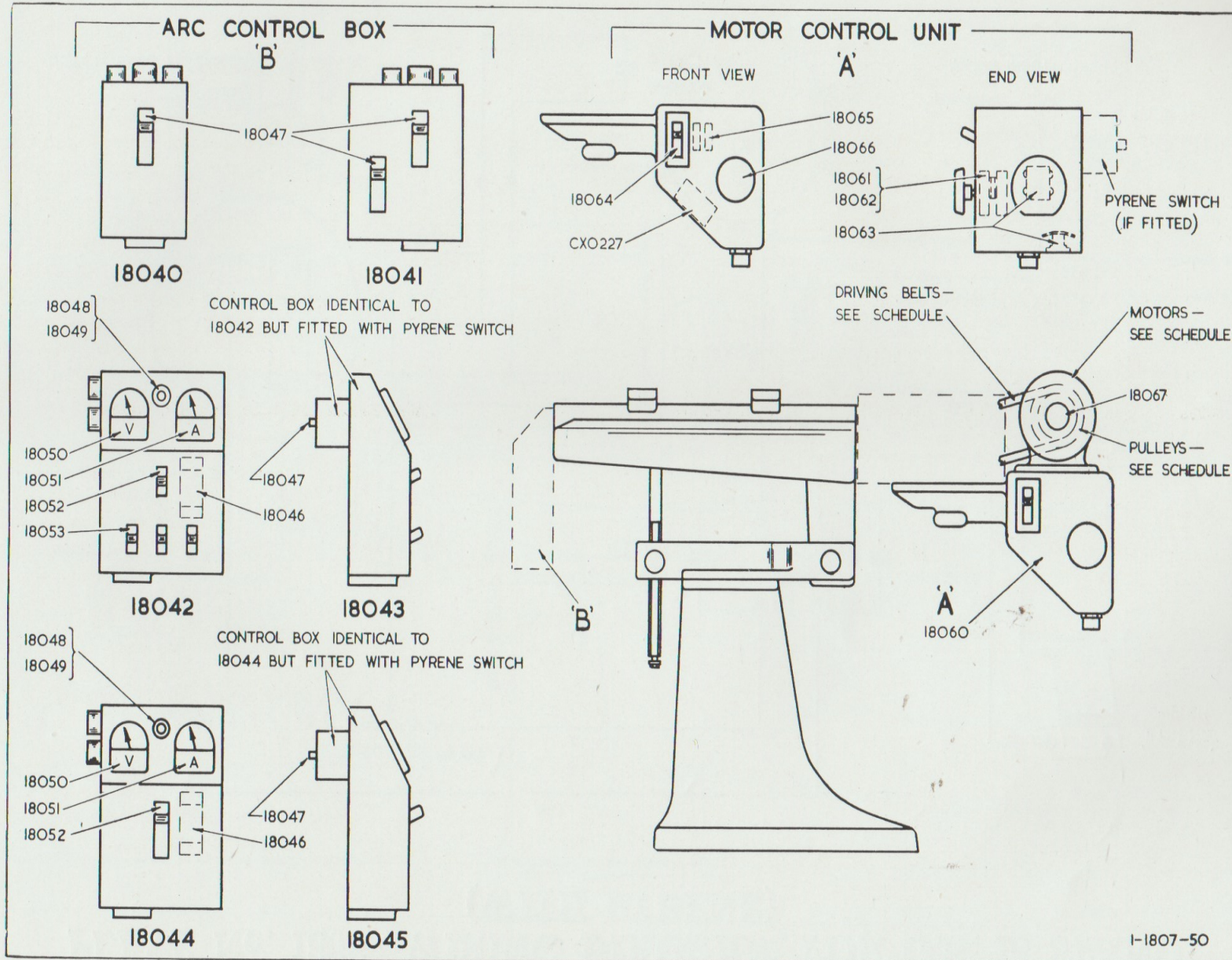
3"(76 M/M) HIGHER—ADD 3"(76 M/M) TO 'D' ABOVE
3"(76 M/M) LOWER—SUBTRACT 3"(76 M/M) FROM 'D' ABOVE
6"(152 M/M) " " 6"(152 M/M) " " "

PLATE No. 1801. INSTALLATION DIAGRAM FOR G.K. 18 OUTFIT



NOTE.—Packing pieces are now available to give 1 in. variation.

PLATE No. 1807. ELECTRICAL COMBINATIONS FOR G.K. 18 STAND



ARC CONTROL BOX "B"

- **18040 Switchbracket, Arc, Complete (with Mains Switch N.P.)
- *18041 Switchbox, Arc, Complete (as 18040, but with P)
- **18042 Switchbox, Arc, Complete (with Mains and Selector Switches and Meters, N.P.)
- *18043 Switchbox, Arc, Complete (as 18042, but with P.)
- **18044 Switchbox, Arc, Complete (with Mains Switch and Meters N.P.)
- *18045 Switchbox, Arc, Complete (as 18044, but with P.)
- 18046 Shunt, Ammeter, for
- 18047 Switch, Arc, 60 amperes, "Sanders"
- 18048 Fuse, 5 ampere, Glass Cartridge
- 18049 Fuseholder, Panel
- 18050 Voltmeter, 0/100 volts
- 18051 Ammeter, 0/100 amperes
- 18052 Switch, Arc, Complete, 60 amperes, "Sanders"
- 18053 Switch, Selector, 30 amperes, Diamond "H"

MOTOR CONTROL UNIT "A"

- *18060 Unit, Motor Control, Complete (with or without P.)
- 18061 Rheostat, Motor—200/250 volts
- 18062 Rheostat, Motor—110/120 volts
- 18063 Block, Terminal, Complete
- 18064 Switch, Motor, 30 ampere, Diamond "H"
- 18065 Condenser, 0.25 mfd.
- 18066 Knob, Moulded, for Rheostat
- 18067 Knob, Motor for

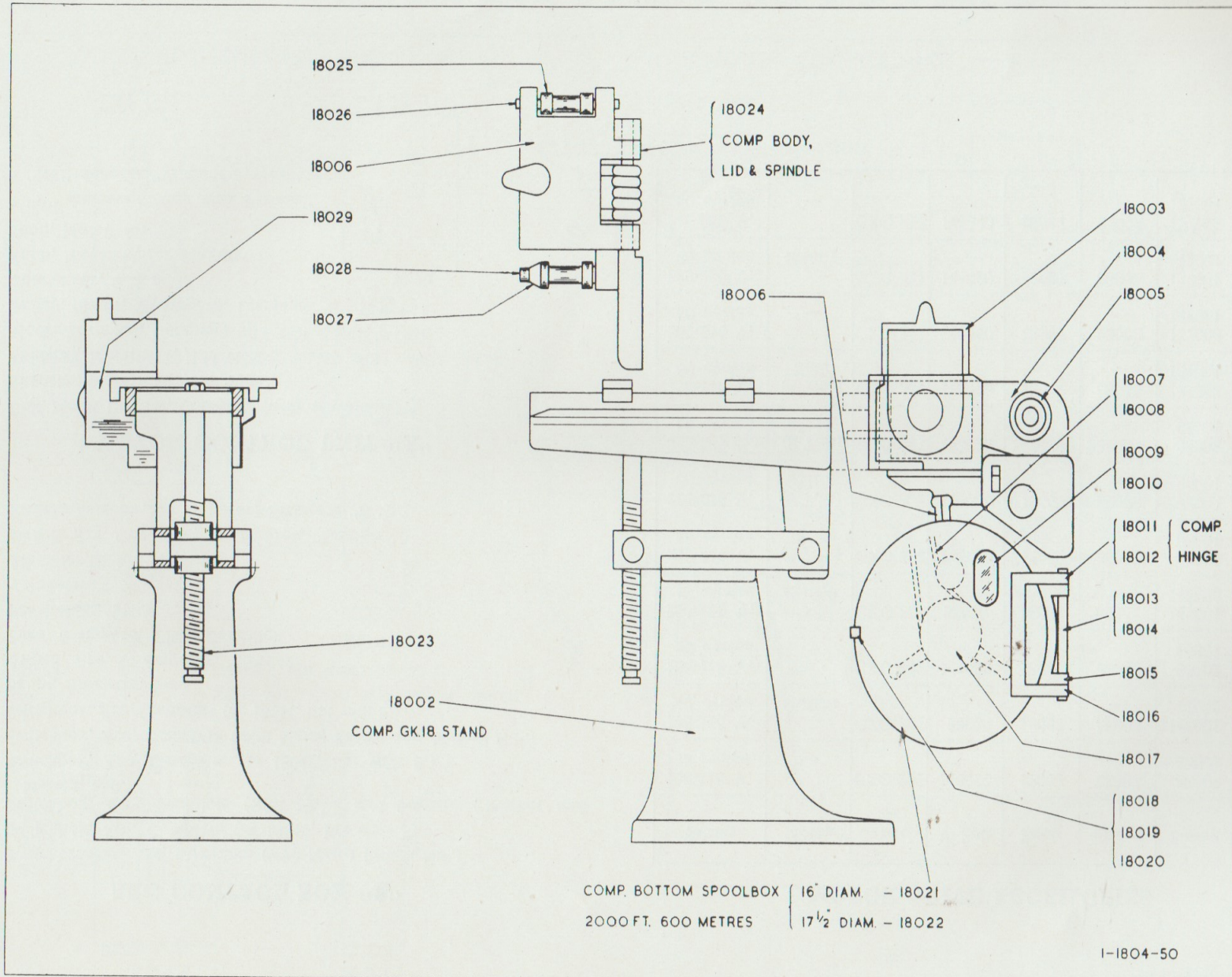
* "P" denotes "Fitted with Pyrene"

** "NP" denotes "Without Pyrene"

MOTOR DRIVE ACCESSORIES

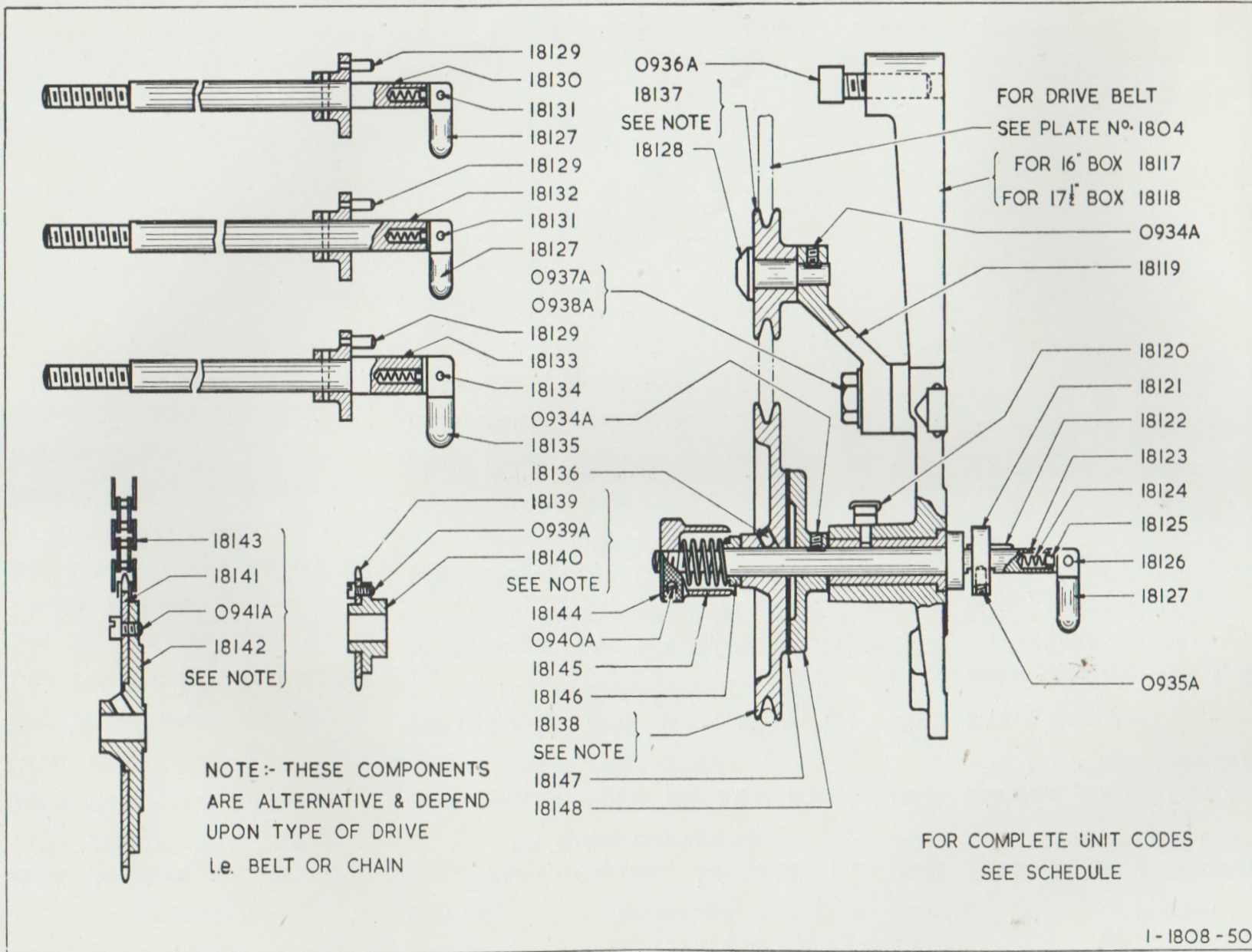
Rating	Motor	Capacitor	V Belt	Knob	Sleeve	Pulley	Bore
105-115 V. 25 cycles	—	CXO.227	146020	18067	85003 —	85002 85001	1" diam. 1" diam.
105-115 V. 40 cycles	421000	CXO.227	85030	18067	85003 —	146001 146002	1" diam. 1" diam.
105-115 V. 50 cycles	—	CXO.227	146020	18067	85003 —	85002 85001	1" diam. 1" diam.
200-220 V. 40 cycles	421000	CXO.227	85030	18067	85003 —	146001 146002	1" diam. 1" diam.
200-210 V. 50 cycles	(B.T.H.) 85109	CXO.227	146020	18067	85003 —	85002 85001	1" diam. 1" diam.
220-230 V. 50 cycles	(B.T.H.) 85107	CXO.227	146020	18067	85003 —	85002 85001	1" diam. 1" diam.
240-250 V. 50 cycles	(B.T.H.) 85111	CXO.227	146020	18067	85003 —	85002 85001	1" diam. 1" diam.
105-115 V. 60 cycles	(B.T.H.) 137107	CXO.227	146020	18067	85003 —	137002 137001	1" diam. 1" diam.
200-210 V. 60 cycles	—	CXO.227	146020	18067	85003 —	137002 137001	1" diam. 1" diam.
220-230 V. 60 cycles	454001	CXO.227	146020	18067	85003 —	137002 137001	1" diam. 1" diam.
240-250 V. 60 cycles	—	CXO.227	146020	18067	85003 —	137002 137001	1" diam. 1" diam.

PLATE No. 1804. MECHANICAL ACCESSORIES FOR G.K. 18 STAND



PART No.	DESCRIPTION	PART No.	DESCRIPTION	PART No.	DESCRIPTION
18002	Stand, Complete, G.K. 18 (Mechanical)	18012	Hinge, Complete (for 2,000 ft., 17½ inches diameter Box)	18021	Spoolbox, Bottom, Complete (2,000 ft., 16 inches diameter)
18003	Cover, Gear	18013	Spindle, Hinge (for 2,000 ft., 16 inches diameter Box)	18022	Spoolbox, Bottom, Complete (2,000 ft., 17½ inches diameter)
18004	Cover, Motor	18014	Spindle, Hinge (for 2,000 ft., 17½ inches diameter Box)	18023	Screw, Elevating
18005	Ring, Motor Cover	18015	Hinge, Box (for 2,000 ft., 17½ inches diameter only)	18024	Body, Complete, with Spindle, for Film Trap
18006	Trap, Film, Spool Bottom, Complete	18016	Hinge, Lid (for 2,000 ft., 17½ inches diameter only)	18025	Roller, Top, Film Trap
18007	Belt, Take-up (for 2,000 ft., 16 inches diameter Box)	18017	Take-up Assemblies, see page 46	18026	Spindle, Top Roller
18008	Belt, Take-up (for 2,000 ft., 17½ inches diameter Box)	18018	Catch, Complete, and Sneck	18027	Roller, Bottom, Film Trap
18009	Window, Mica	18019	Catch, Spoolbox Lid	18028	Spindle, Bottom Roller
18010	Window, Gauze	18020	Sneck, Spoolbox	18029	Cover, Sound Unit, Gearing
18011	Hinge, Complete (for 2,000 ft., 16 inches diameter Box)				

PLATE NO. 1808. BOTTOM TAKE-UP ASSEMBLY FOR G.K. 18

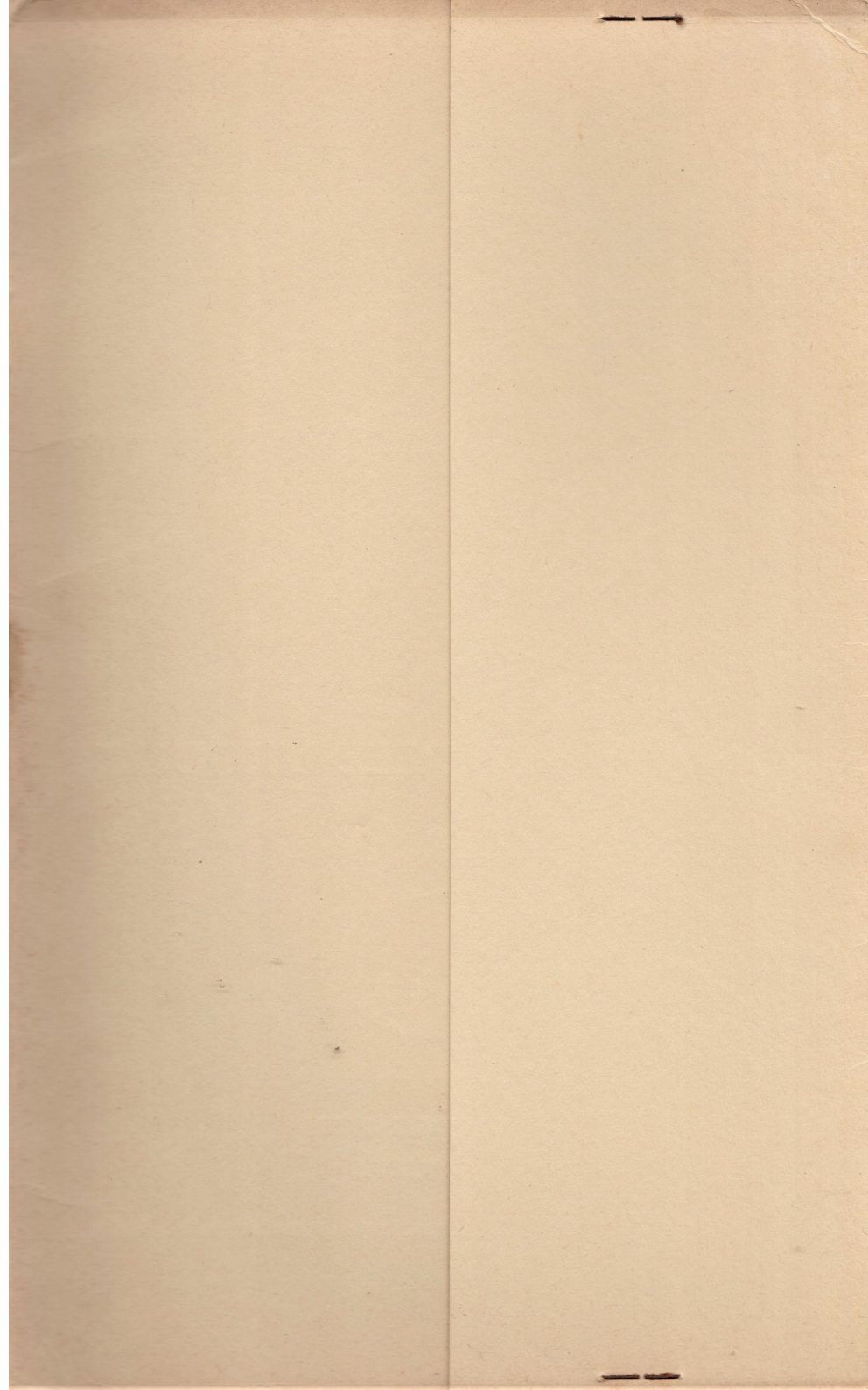


PART No.	DESCRIPTION	PART No.	DESCRIPTION	PART No.	DESCRIPTION
18117	Arm with Spindle Bearing (for 16 inch Box only)	18130	9 mm. Spindle, complete with Driving Pin and Collar	18141	Take-up Sprocket (Chain Drive only). See Note
18118	Arm with Spindle Bearing (for 17½ inch Box only)	18131	Pivot Pin	18142	Take-up Sprocket Hub (Chain Drive only). See Note
18119	Belt Tension Arm	18132	¾-inch diameter Spindle, complete with Driving Pin and Collar	18143	Take-up Chain—148 Links
19120	Oilcup	18133	½ inch diameter Spindle, complete with Driving Pin and Collar	18144	Spring Nut
18121	Spool Driving Collar (5/16 inch Spindle)	18134	Pivot Pin for ½ inch diameter Spindle	18145	Pressure Spring
18122	Key (5/16 inch Spindle)	18135	Click End for ½ inch diameter Spindle	18146	Spring Collar, complete with Pin
18123	5/16 inch Spindle, complete with Stop Collar	18136	Ball Oiler	18147	Clutch Disc
18124	Spring for Click-End Spindle	18137	Jockey Pulley (Belt Drive only) See Note	18148	Clutch Plate
18125	Plunger for Click-End Spindle	18138	Take-up Pulley (Belt Drive only) See Note	18149	Complete Bottom Spool Arm (Belt Drive)—17½ inch diameter Box
18126	Pivot Pin	18139	Jockey Sprocket (Chain Drive only) See Note	18150	Complete Bottom Spool Arm (Chain Drive)—17½ inch diameter Box
18127	Click-End	18140	Jockey Sprocket Hub (Chain Drive only) See Note	18151	Complete Bottom Spool Arm (Belt Drive)—16 inch diameter Box
18128	Take-up Jockey Spindle				
18129	Spool Driving Pin				

NOTE.—These components are alternative and depend upon type of drive, i.e. "Belt" or "Chain".
For particulars of Driving Belt, see Plate No. 1804.

WASHERS, PINS AND SCREWS

0934A	Screw Securing 18148 and 18128	0937A	(DNP) Screw Securing 18119	0940A	Screw Securing 18144
0935A	Screw Securing 18121	0938A	(DNP) Washer for 0937A	0941A	(DNP) Screw Securing 18141
0936A	Screw Securing 18117 and 18118	0939A	(DNP) Screw Securing 18139		



A GAUMONT-KALEE PRODUCT

by



MORTIMER HOUSE
37-41 MORTIMER STREET
LONDON, W.1

TELEPHONE: MUSEUM 5 32

TELEGRAMS: GEBEKAY, WESDO, LONDON