



**CINEMECCANICA  
LONG PLAYING  
TOWERS**

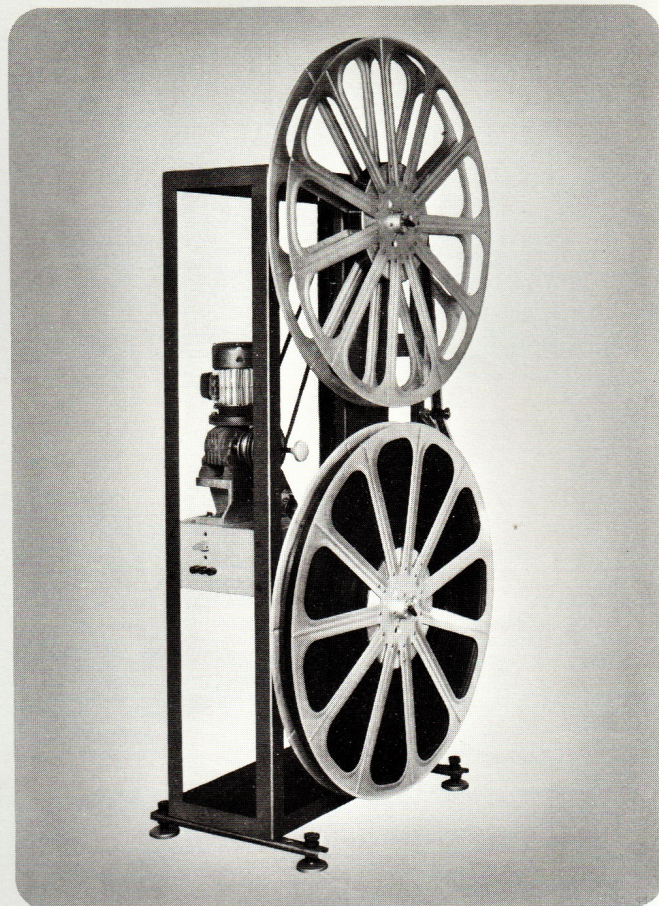
**PROFESSIONAL  
CINEMA SERVICES**

# CINEMECCANICA LONG PLAYING TOWERS

To meet the continuously growing demand for projection systems which handle a complete programme using a single projector Cinemeccanica have designed two new Long Playing Towers.

## DGB 2x4

A single sided Tower designed for programmes consisting of a single feature only plus shorts, trailers etc. The Tower is firmly fixed to the floor and has a capacity of 4000-metres (13,000-ft) giving up to 2½ hours of uninterrupted projection. Rewind time is 12 minutes.

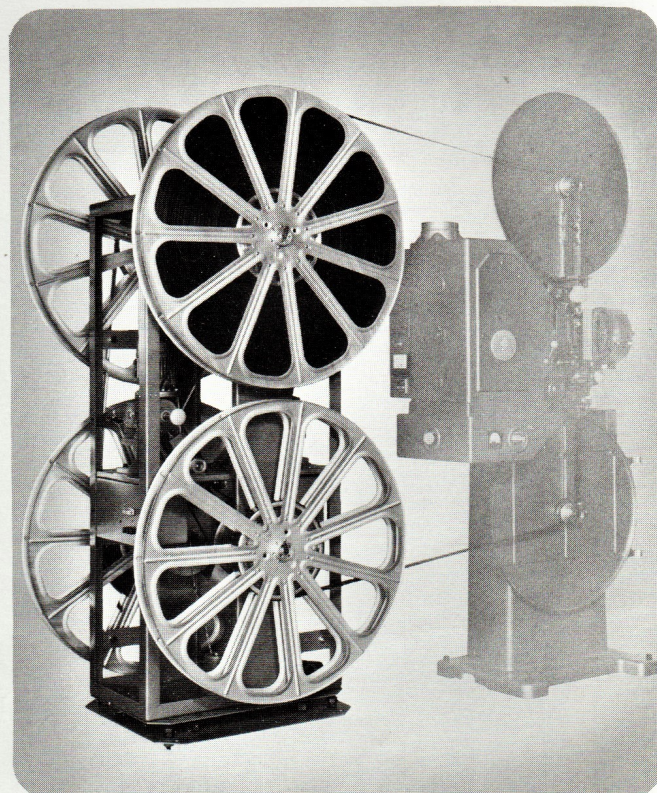


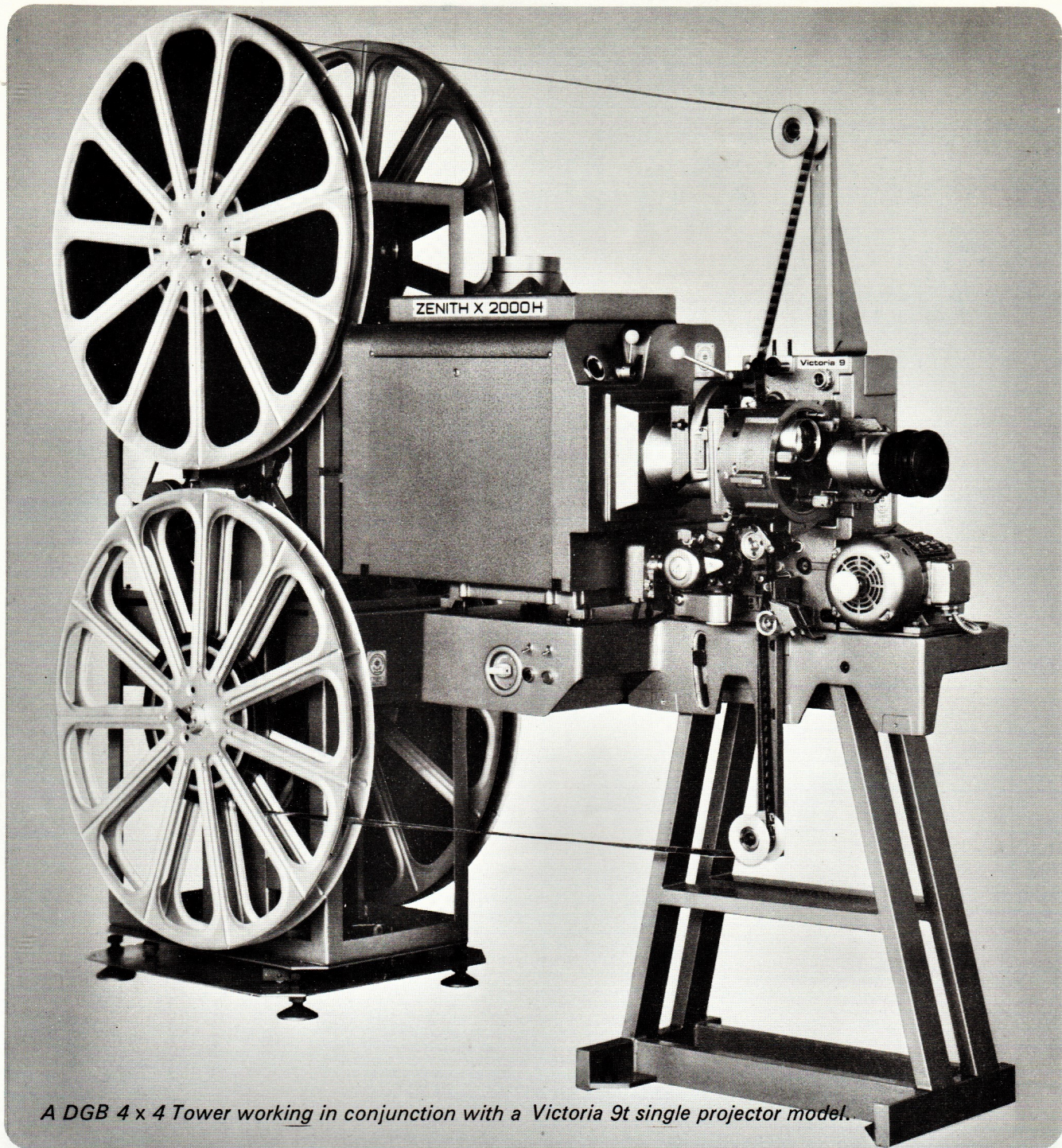
## DGB 4x4

A double sided Tower with 4000-metres (13,000-ft) capacity on each side providing a total programme time of 4½ hours. After uninterrupted projection of up to 2½ hours of programme using one side, the Tower is rotated around its centre axis during the interval and the other side is laced through the projector. The first part of the programme is then rewound while the second part is being projected. Rewind time is 25 minutes.

Make-up or breakdown of one feature can proceed on one side while projecting the other since two independent motors and gear boxes are used – one for each side.

The Tower is secured into its two positions by means of a locking device which is released by a foot-operated latch.





*A DGB 4 x 4 Tower working in conjunction with a Victoria 9t single projector model.*

## Features common to both models

Both Long Playing Towers utilise patented weight compensated clutches for take-up which ensures constant, light film tension, irrespective of film diameter. Loop absorbers on the feed reels eliminate all slack film and avoid snatch when starting up. The Towers can therefore be automated for remote starting and do not require any adjustment during projection. This permits unattended operation which is invaluable, particularly for twin, triple or multi screen cinemas.

All motors, gearboxes, take-up/rewind clutches are the same as those used in the highly reliable Cinemeccanica Victoria 18 projector of which there are now some 1000 in operation throughout the world.

The constant, light tension on the film and the absence of multi changeover/rethreading operations makes the DGB Towers much kinder to film than conventional two projector systems. The preferred position for the Towers is directly behind the projector but if space is limited the Towers can be positioned to the side of the projector and angled roller assemblies used to feed the projector.

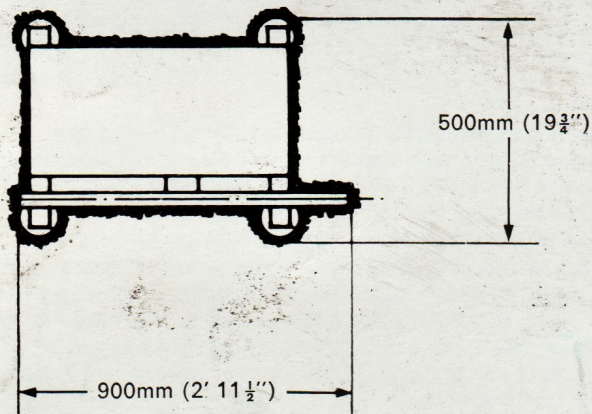
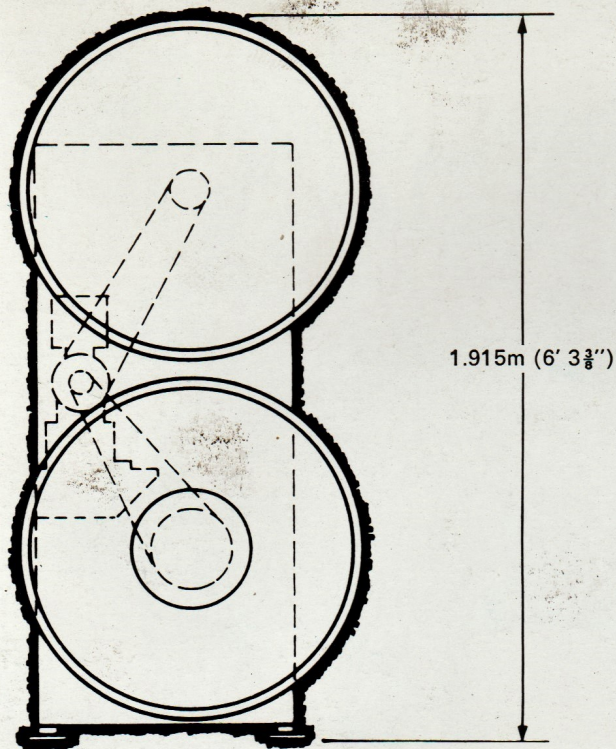
## Optional features available

A device is available for fixing to the Towers to make-up or breakdown the programme direct from/to transit reels.

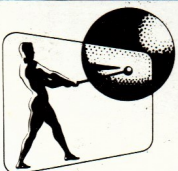
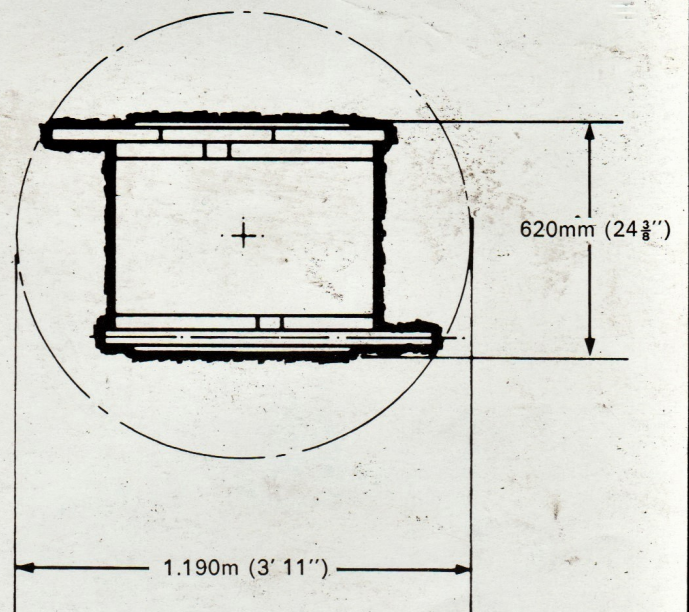
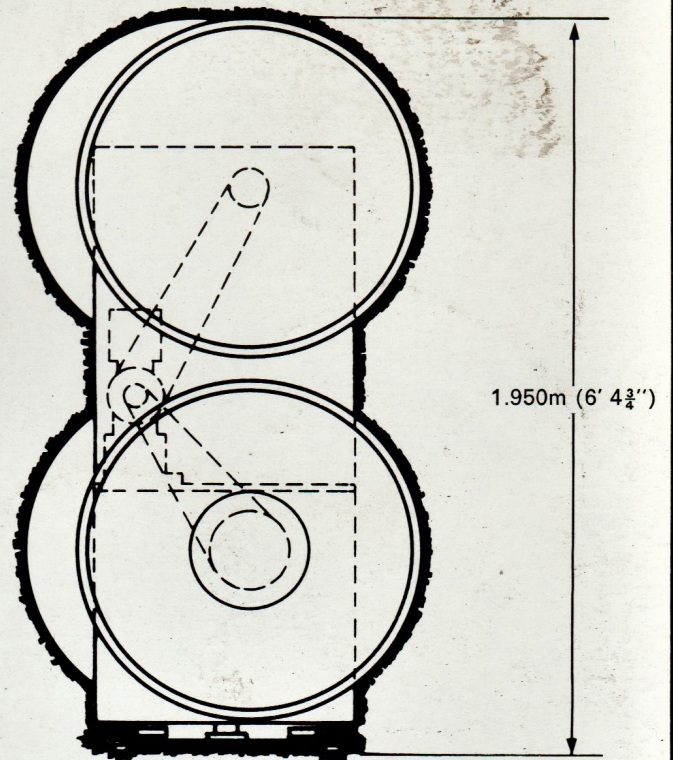
Automatic rewind shut-offs are available on both Towers (one on each side in the case of the DGB 4 x 4).

Varying degrees of automation are available and more detailed information can be supplied on request.

# DGB 2x4 Dimensions



# DGB 4x4 Dimensions



Rank Film  
Equipment

Rank Audio Visual Limited  
P.O. Box 70, Great West Road, Brentford  
Middlesex, TW8 9HR, England.  
Telephone: 01-568 9222 Telex: 24408  
Cables: Rankaudio, Brentford.