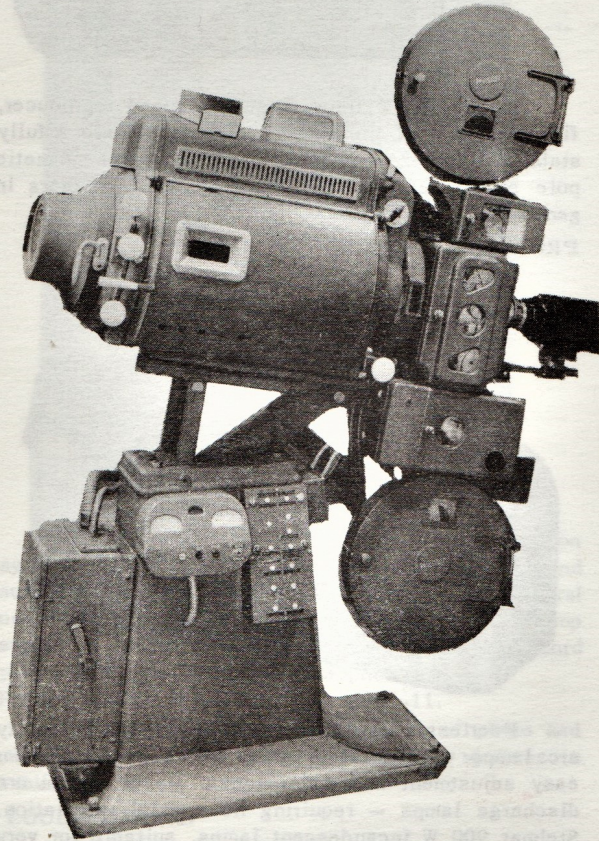




Information Sheet

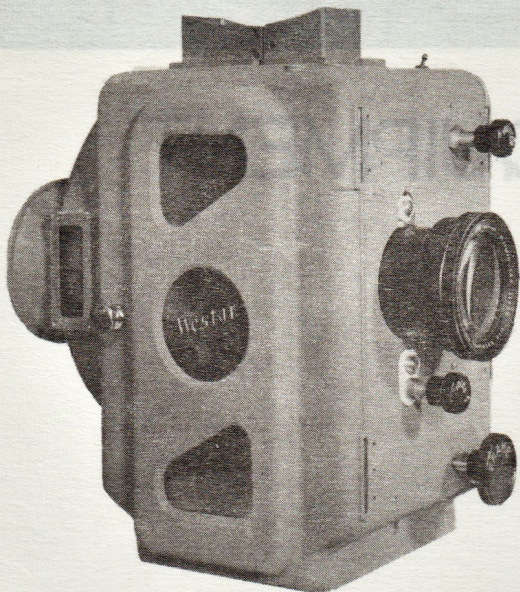
CINEMA EQUIPMENT



Westrex has equipped cinemas all over the world with sound reproduction and projection apparatus ever since the inception of the "talking film" more than 33 years ago. By virtue of close ties with the film production industry the latest technical developments have been made available to Westrex for early incorporation into the range of projection equipment. At the same time the extensive Westrex research and development facilities in Hollywood have produced major developments; and many Academy Awards have been won for Westrex research achievements. To-day Westrex sound reproducers and projectors are manufactured and sold in all parts of the world through the Westrex network of Subsidiary Companies and appointed Distributors. The Westar Projector has become the logical choice of many hundreds of theatres where superb performance is of prime concern. The Projector and its associated equipment are fully tropicalized. In dusty climates the total enclosure of the projector prevents the entrance of dust and other harmful abrasive materials, ensuring the best treatment for the film. Factory sealed bearings and complete accessibility ensures the maximum life with ease of maintenance. This leaflet describes briefly the main components of the theatre system; further information can be obtained from your local Westrex Company or Distributor. The Westrex Installation Planning Department is freely available to give advice on any aspect of film presentation.

WESTREX CINEMA EQUIPMENT

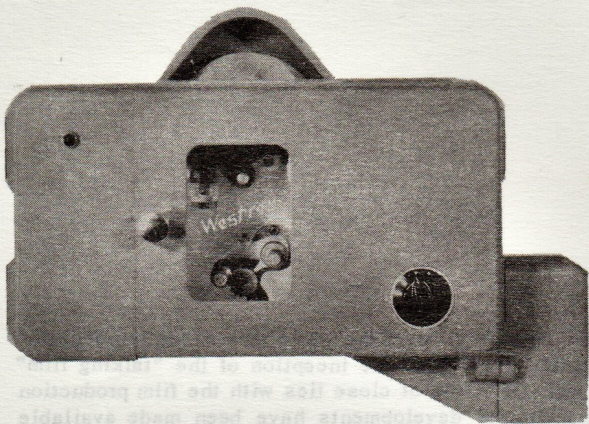
2001 WESTAR PROJECTOR



An extremely reliable 35 mm projector used extensively throughout the U.K. and the World. Functional in design with all working parts easily accessible for maintenance and, if necessary, adaption on site, for all forms of 35 mm film presentation.

Further details, Information Sheet W1-8.

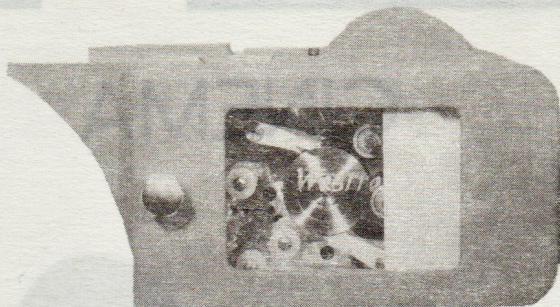
2003C PHOTO-TRACK SOUND REPRODUCER



A 35 mm sound reproducer which can be adapted for 200 mm push-pull photo track or single magnetic track recordings. Features are: a specially designed tight loop system with Academy Award winning hydro flutter suppressor, two prefocussed exciter lamp brackets for immediate lamp replacement should one fail and a range of drive motors for most power supplies. Can be adapted to suit most 35 mm projectors in general use.

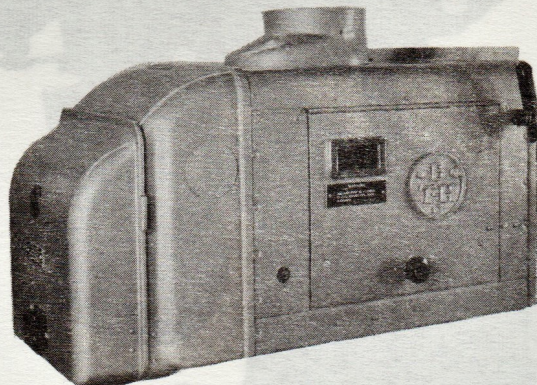
Further details, Information Sheet W1-7.

2004 MAGNETIC SOUND REPRODUCER



A 35 mm, 4 track magnetic sound reproducer, fitting on top of the projector. Features are a fully stabilized pull-through drive with replaceable magnetic pole pieces. Suitable for most 35 mm projectors in general use.

PROJECTION LAMPS



Peerless, Magnarc and Monarc high intensity arc lamps with metal or glass mirrors, designed for easy adjustment and maintenance. Mazda Xenon arc discharge lamps - requiring no special ventilation. Stelmar 900 W incandescent lamps, suitable for very small theatres. Arc ventilation systems employing extractor fans and flexible metallic flues.

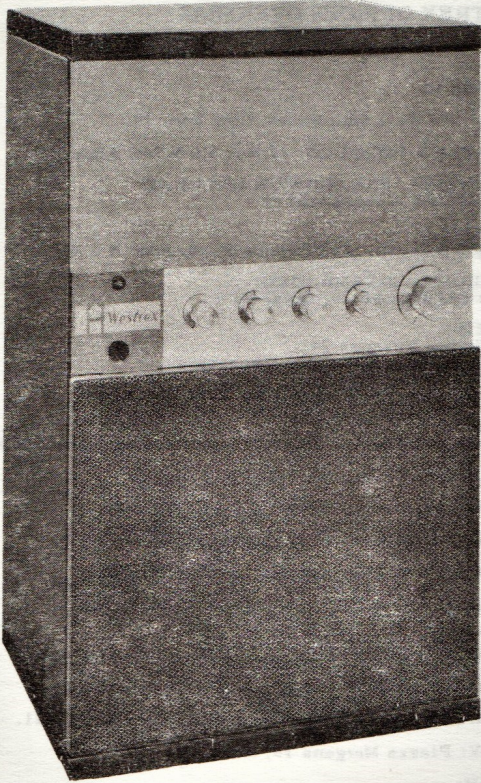
ARC RECTIFIERS



Various types of mercury vapour and metal rectifiers provided as required. Either individual units, one per machine, or combined units supplying two or more arcs. Normally supplied for multi-phase operation; single phase to special order.

WESTREX CINEMA EQUIPMENT

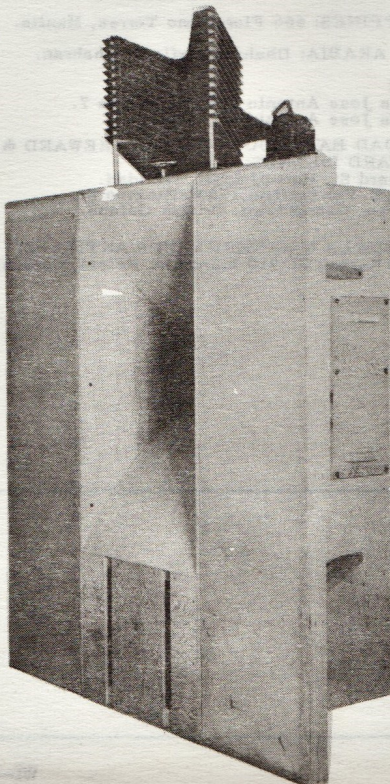
MAIN SOUND SYSTEMS WESTREX 50 SYSTEM



A compact 50 W single channel amplification system, for small and medium sized theatres and suitable for most photo-sound reproducers in general use. Facilities include adjustable exciter lamp supply, a remote volume control and inputs for record player and high impedance microphone. Further details, Information Sheet W1-11.

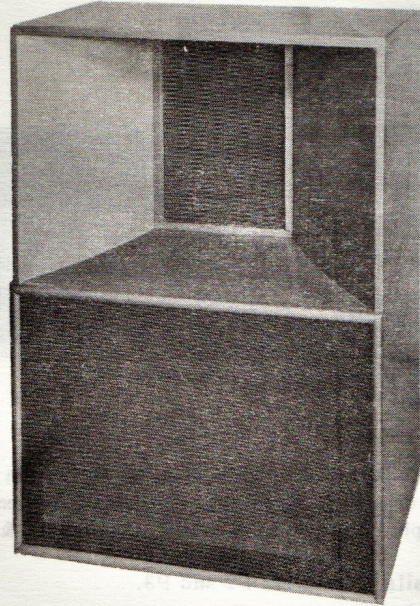
For larger cinemas a full range of photo and multi-track magnetic sound reproducing systems is available.

LOUDSPEAKERS TYPE 2309A.



TYPE 2309A A high fidelity two-way loudspeaker system for indoor use incorporating 1 H.F. unit and 2 L.F. units for mounting behind a perforated screen; for medium size theatres.

TYPE 2241



TYPE 2241. A high efficiency loudspeaker partially weatherproof and suitable for outdoor use in small and medium size theatres, mounted at the side of, or below the screen. Incorporates 1 H.F. unit and 1 L.F. unit. Both systems utilise the well-known 2090 high frequency pressure unit coupled with an "Acoustilens" for improved dispersion. Further details of the 2309A and 2241 loudspeakers on Information Sheet W1-11.

A full range of other types of main speakers and ambient speakers (auditorium effects) are also available.

RECORD PLAYERS

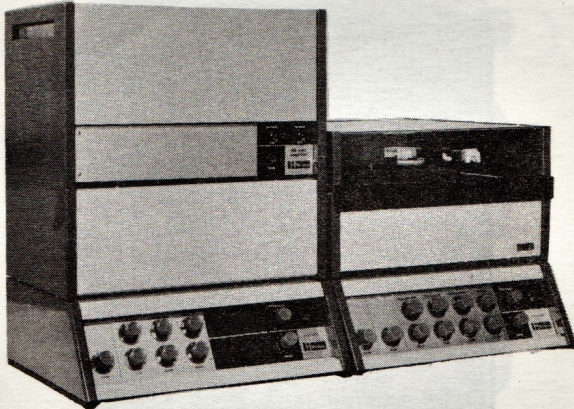


Complete range available with single and double turntable (multi-speed) ceramic or crystal pick-up, transcription motors or autochange playing decks; normally supplied in fireproof cases.



WESTREX CINEMA EQUIPMENT

STAGE AMPLIFICATION AND PUBLIC ADDRESS SYSTEMS



Either integrated with the main sound system or as a completely separate system. The photograph shows a Westrex Amplifier & Mixer Console.

Full details on leaflets P2 and P3.

SPOOL BOXES A variety of upper and lower spool boxes available as required.

LENSES A full range of projector lenses of the highest quality can be provided.

PROJECTION ROOM EQUIPMENT

Various types and patterns of the following equipment can be provided to order.

- Re-winders and re-wind benches
- Spool boxes — ferrous and non-ferrous.
- Record Cabinets
- Spool Cabinets
- Film Splicers
- Port Glass and shutter assemblies.

PEDESTALS

The Westrex pedestal is extremely versatile, easily adapted to accommodate most reproducers/projectors currently in use, and all types of arcs and projector lamps.

SCREENS, SCREEN FRAMES AND MASKING

Smith Harkness equipment for screens of all types and sizes, with surfaces to suit all applications. Variable masking gear, curtain tracks and controls, manually or electrically operated.

WESTREX OFFICES OVERSEAS

OVERSEAS

U.S.A. 540 West 58th Street, New York 19.

ALGERIA & MOROCCO: 47 Rue Michelet, Algiers.

ARGENTINA, PARAGUAY & URUGUAY:
Uruguay 768, Buenos Aires.

AUSTRALIA:
Broughton House, 181 Clarence St., Sydney, N.S.W.

BELGIUM & LUXEMBOURG:
Place des Martyrs 16, Brussels 1.

BRAZIL:
Rua Correa Vasques 34C,
Rio de Janeiro, Estado da Guanabara.

CEYLON: Iceland Bldgs, Galle Road, Colombo 3.

CHILE:
Edificio Sud America, Bandera esquina Augustinas, Santiago.

COLOMBIA: Carrera 5A, No.19-40, Bogota.

CUBA: Almendares 180 (Film Centro) Havana.

DENMARK: Vesterport 481, Copenhagen V.

EGYPT: 39 Sh. Soliman Pasha, Cairo, V.A.R.

FRANCE: 120 Avenue des Champs-Elysees, Paris.

HONG KONG:
1302 Luk Hoi Tong Building, 31 Queen's Road, Central.

INDIA: Metro House, Esplanade Rd. Bombay No.1.

INDONESIA: Pegangsaan Timur, 19A, Djakarta 111/21.

ITALY: Piazza Margana 19, Rome.

JAPAN:
Chiyoda Building, Room No.305
14, 2-chome, Marunouchi, Chiyoda-ku, Tokyo.

LEBANON:
408 Pan American Bldg, Place Riad Solh, Beirut.

MALAYA: 1 Boon Kim Road, Kuala Lumpur. (Selangor)

MEXICO: Tonalá No.143, Mexico 7, D.F.

NETHERLANDS: Singel 127, Amsterdam C.

NEW ZEALAND: 58 Kent Terrace, Wellington C.3.

PAKISTAN:
Attar Singh Bldg, The Mall, Lahore.
Karachi Hse, McLeod Road, Karachi.

PANAMA CANAL ZONE & CENTRAL AMERICA:
Avenida 5a Cuba, 32-14 Panama City.

PERU & BOLIVIA:
Edificio Hidalgo, 950-954 Plaza San Martin, Lima.

PHILIPPINES: 666 Florentino Torres, Manila.

SAUDI ARABIA: Dhahran Airfield, Dhahran.

SPAIN:
Avenida Jose Antonio 636, Barcelona 7.
Avenida Jose Antonio 66, Madrid 13.

TRINIDAD BARBADOS GUIANAS LEeward &
WINDWARD ISLANDS:
11 Edward St. Port-of-Spain, Trinidad.
Carlton E. Van Sertima, 193 Wellington St.
Lacytown, Georgetown, British Guiana.

VENEZUELA & NETHERLANDS ANTILLES:
Edificio Karam, Of. 210 Ibarra A. Pelota, Caracas, D.F.

Westrex Company Limited
152 Coles Green Road
London NW2

TELEPHONE GLADSTONE 5401